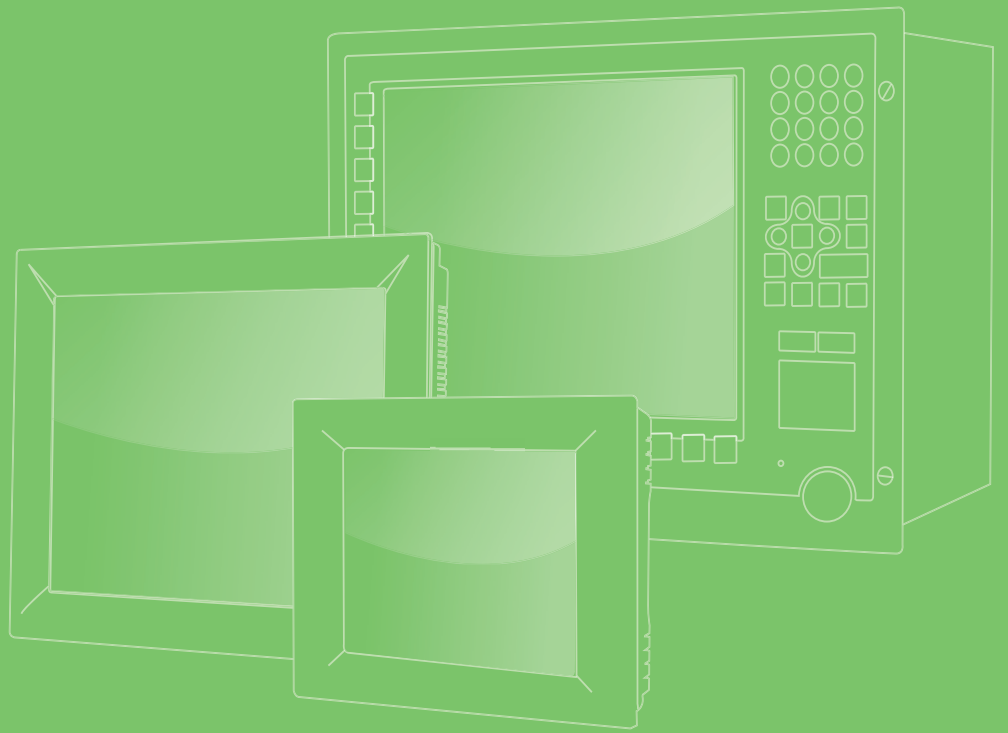


User Manual



TPC-31/61

3.5"/ 5.7" QVGA TFT LCD TI
Cortex-A8 Touch Panel
Computer

ADVANTECH

Enabling an Intelligent Planet

Copyright

The documentation and the software included with this product are copyrighted 2012 by Advantech Co., Ltd. All rights are reserved. Advantech Co., Ltd. reserves the right to make improvements in the products described in this manual at any time without notice. No part of this manual may be reproduced, copied, translated or transmitted in any form or by any means without the prior written permission of Advantech Co., Ltd. Information provided in this manual is intended to be accurate and reliable. However, Advantech Co., Ltd. assumes no responsibility for its use, nor for any infringements of the rights of third parties, which may result from its use.

Acknowledgements

IBM, PC/AT and VGA are trademarks of International Business Machines Corporation.

Microsoft Windows and MS-DOS are registered trademarks of Microsoft Corp.

All other product names or trademarks are properties of their respective owners.

This Manual Covers the Following Models:

- TPC-31T
- TPC-61T

Product Warranty (2 years)

Advantech warrants to you, the original purchaser, that each of its products will be free from defects in materials and workmanship for two years from the date of purchase.

This warranty does not apply to any products which have been repaired or altered by persons other than repair personnel authorized by Advantech, or which have been subject to misuse, abuse, accident or improper installation. Advantech assumes no liability under the terms of this warranty as a consequence of such events.

Because of Advantech's high quality-control standards and rigorous testing, most of our customers never need to use our repair service. If an Advantech product is defective, it will be repaired or replaced at no charge during the warranty period. For out-of-warranty repairs, you will be billed according to the cost of replacement materials, service time and freight. Please consult your dealer for more details.

If you think you have a defective product, follow these steps:

1. Collect all the information about the problem encountered. (For example, CPU speed, Advantech products used, other hardware and software used, etc.) Note anything abnormal and list any onscreen messages you get when the problem occurs.
2. Call your dealer and describe the problem. Please have your manual, product, and any helpful information readily available.
3. If your product is diagnosed as defective, obtain an RMA (return merchandise authorization) number from your dealer. This allows us to process your return more quickly.
4. Carefully pack the defective product, a fully-completed Repair and Replacement Order Card and a photocopy proof of purchase date (such as your sales receipt) in a shippable container. A product returned without proof of the purchase date is not eligible for warranty service.
5. Write the RMA number visibly on the outside of the package and ship it prepaid to your dealer.

Declaration of Conformity

CE

This product has passed the CE test for environmental specifications.

FCC Class A

Note: This equipment has been tested and found to comply with the limits for a Class A digital device, pursuant to part 15 of the FCC Rules. These limits are designed to provide reasonable protection against harmful interference when the equipment is operated in a commercial environment. This equipment generates, uses, and can radiate radio frequency energy and, if not installed and used in accordance with the instruction manual, may cause harmful interference to radio communications. Operation of this equipment in a residential area is likely to cause harmful interference in which case the user will be required to correct the interference at his own expense.

Technical Support and Assistance

1. Visit the Advantech web site at www.advantech.com/support where you can find the latest information about the product.
2. Contact your distributor, sales representative, or Advantech's customer service center for technical support if you need additional assistance. Please have the following information ready before you call:
 - Product name and serial number
 - Description of your peripheral attachments
 - Description of your software (operating system, version, application software, etc.)
 - A complete description of the problem
 - The exact wording of any error messages

Warnings, Cautions and Notes

Warning! *Warnings indicate conditions, which if not observed, can cause personal injury!*



Caution! *Cautions are included to help you avoid damaging hardware or losing data. e.g.*



There is a danger of a new battery exploding if it is incorrectly installed. Do not attempt to recharge, force open, or heat the battery. Replace the battery only with the same or equivalent type recommended by the manufacturer. Discard used batteries according to the manufacturer's instructions.

Note! *Notes provide optional additional information.*



Safety Instructions

1. Read these safety instructions carefully.
2. Keep this User Manual for later reference.
3. Disconnect this equipment from any AC outlet before cleaning. Use a damp cloth. Do not use liquid or spray detergents for cleaning.
4. For plug-in equipment, the power outlet socket must be located near the equipment and must be easily accessible.
5. Keep this equipment away from humidity.
6. Put this equipment on a reliable surface during installation. Dropping it or letting it fall may cause damage.
7. The openings on the enclosure are for air convection. Protect the equipment from overheating. **DO NOT COVER THE OPENINGS.**
8. Make sure the voltage of the power source is correct before connecting the equipment to the power outlet.
9. Position the power cord so that people cannot step on it. Do not place anything over the power cord.
10. All cautions and warnings on the equipment should be noted.
11. If the equipment is not used for a long time, disconnect it from the power source to avoid damage by transient overvoltage.
12. Never pour any liquid into an opening. This may cause fire or electrical shock.
13. Never open the equipment. For safety reasons, the equipment should be opened only by qualified service personnel.
14. If one of the following situations arises, get the equipment checked by service personnel:
 - a. The power cord or plug is damaged.
 - b. Liquid has penetrated into the equipment.
 - c. The equipment has been exposed to moisture.
 - d. The equipment does not work well, or you cannot get it to work according to the user's manual.
 - e. The equipment has been dropped and damaged.
 - f. The equipment has obvious signs of breakage.
15. **DO NOT LEAVE THIS EQUIPMENT IN AN ENVIRONMENT WHERE THE STORAGE TEMPERATURE MAY GO BELOW -20° C (-4° F) OR ABOVE 70° C (158° F). THIS COULD DAMAGE THE EQUIPMENT. THE EQUIPMENT SHOULD BE IN A CONTROLLED ENVIRONMENT.**
16. **CAUTION: DANGER OF EXPLOSION IF BATTERY IS INCORRECTLY REPLACED. REPLACE ONLY WITH THE SAME OR EQUIVALENT TYPE RECOMMENDED BY THE MANUFACTURER, DISCARD USED BATTERIES ACCORDING TO THE MANUFACTURER'S INSTRUCTIONS.**

Wichtige Sicherheitshinweise

1. Bitte lesen sie Sich diese Hinweise sorgfältig durch.
2. Heben Sie diese Anleitung für den späteren Gebrauch auf.
3. Vor jedem Reinigen ist das Gerät vom Stromnetz zu trennen. Verwenden Sie Keine Flüssig-oder Aerosolreiniger. Am besten dient ein angefeuchtetes Tuch zur Reinigung.
4. Die NetzanschlUBsteckdose soll nahe dem Gerät angebracht und leicht zugänglich sein.
5. Das Gerät ist vor Feuchtigkeit zu schützen.
6. Bei der Aufstellung des Gerätes ist auf sicheren Stand zu achten. Ein Kippen oder Fallen könnte Verletzungen hervorrufen.
7. Die Belüftungsöffnungen dienen zur Luftzirkulation die das Gerät vor überhit-zung schützt. Sorgen Sie dafür, daB diese Öffnungen nicht abgedeckt werden.
8. Beachten Sie beim. AnschluB an das Stromnetz die AnschluBwerte.
9. Verlegen Sie die NetzanschlUBleitung so, daB niemand darüber fallen kann. Es sollte auch nichts auf der Leitung abgestellt werden.
10. Es sollte auch nichts auf der Leitung abgestellt werden. Alle Hinweise und War-nungen die sich am Ger?ten befinden sind zu beachten.
11. Wird das Gerät über einen längeren Zeitraum nicht benutzt, sollten Sie es vom Stromnetz trennen. Somit wird im Falle einer Überspannung eine Beschädigung vermieden.
12. Durch die Lüftungsöffnungen dürfen niemals Gegenstände oder Flüssigkeiten in das Gerät gelangen. Dies könnte einen Brand bzw. elektrischen Schlag aus-lösen.
13. Öffnen Sie niemals das Gerät. Das Gerät darf aus Gründen der elektrischen Sicherheit nur von autorisiertem Servicepersonal geöffnet werden.
14. Wenn folgende Situationen auftreten ist das Gerät vom Stromnetz zu trennen und von einer qualifizierten Servicestelle zu überprüfen:
 - a. Netzkabel oder Netzstecker sind beschädigt.
 - b. Flüssigkeit ist in das Gerät eingedrungen.
 - c. Das Gerät war Feuchtigkeit ausgesetzt.
 - d. Wenn das Gerät nicht der Bedienungsanleitung entsprechend funktioniert oder Sie mit Hilfe dieser Anleitung keine Verbesserung erzielen.

Contents

Chapter 1	General Information	1
1.1	Introduction	2
1.2	Specifications	2
1.2.1	System Kernel.....	2
1.2.2	I/O Ports.....	2
1.2.3	Storage	2
1.2.4	Safety and Environment.....	3
1.2.5	LCD Specifications.....	3
1.2.6	Touchscreen Specifications	3
1.2.7	Power.....	3
1.2.8	I/O Ports Arrangement	4
	Figure 1.1 TPC-31T I/O Ports Arrangement	4
	Figure 1.2 TPC-61T I/O Ports Arrangement	4
1.3	Panel Mounting	5
	Figure 1.3 Panel Mounting.....	5
1.4	Dimensions and Cutout.....	6
	Figure 1.4 TPC-31T Dimensions and Cutout.....	6
	Figure 1.5 TPC-61T Dimensions and Cutout.....	6
Chapter 2	System Setup	7
2.1	System Setup.....	8
	Figure 2.1 Power Connector and Power Lines	8
	Figure 2.2 Pin Assignment on the Power Receptor.....	8
	Figure 2.3 Power Line into the Power Receptor	9
Chapter 3	System Tuning	11
3.1	LCD Tuning	12
	Figure 3.1 Display	12
	Figure 3.2 Display Properties	12
3.2	Touchscreen Calibration	13
	Figure 3.3 Style.....	13
	Figure 3.4 Stylus Properties	13
	Figure 3.5 Touchscreen Calibration.....	14
3.3	Buzzer Setting.....	14
	Figure 3.6 Volume & Sounds Settings 1	14
	Figure 3.7 Volume & Sounds Settings 2.....	14
Chapter 4	Windows CE	17
4.1	Windows CE.....	18
	Figure 4.1 Windows CE on TPC-31/61.....	18
4.2	TPC Utilities	19
4.2.1	Soft-Keyboard	19
	Figure 4.2 Soft-Keyboard.....	19
4.2.2	TPC Configuration	19
	Figure 4.3 TPC Configurator.....	19
	Figure 4.4 General.....	20
	Figure 4.5 Network	20
	Figure 4.6 Advanced Network	21
	Figure 4.7 Watchdog Setting	21

	Figure 4.8 Misc Page.....	22
	Figure 4.9 Reboot Machine	22
	Figure 4.10Registry Saving Success.....	23
	Figure 4.11Registry Editor.....	23
4.2.3	Advantech Tools.....	24
	Figure 4.12Advantech Tools.....	24
	Figure 4.13NotepadPlus.....	25
	Figure 4.14TPC Version Information	25
4.2.4	Other Utilities	26
4.3	Networking	26
4.3.1	Network via Ethernet	26
	Figure 4.15Network and Dial-up Connections.....	26
	Figure 4.16Selected Connection	27
	Figure 4.17Setting IP Address.....	27
	Figure 4.18Setting Name Servers	28
	Figure 4.19Save Registry	28
4.3.2	Network via Serial Port	29
	Figure 4.20PC Connection	29
	Figure 4.21PC Connection Properties.....	30
	Figure 4.22Change Connection.....	30
	Figure 4.23Change Connection.....	31
	Figure 4.24COM1 Set.....	31
	Figure 4.25Microsoft ActiveSync	31
	Figure 4.26Select Connection Setting	32
	Figure 4.27Configure Connection Setting	32
	Figure 4.28Get Connected	33
	Figure 4.29Run Repllog.exe on the TPC.....	33
	Figure 4.30Connection on the TPC	34
	Figure 4.31Connection on the Host PC.....	34
	Figure 4.32Explore the TPC	35
4.4	Application Program Development	35
4.4.1	System Requirements for Developers	35
4.4.2	Building Windows CE Runtime	36
	Figure 4.33Starting a New Project.....	36
	Figure 4.34Selecting.....	37
	Figure 4.35Compiling Your Program	37

Appendix A Watchdog Timer Programming 39

A.1	Device IO Control.....	40
A.2	How to Use the Control Code	41
A.2.1	IOCTL_WDT_ENABLE:.....	41
A.2.2	IOCTL_WDT_DISABLE:.....	41
A.2.3	IOCTL_WDT_STROBE:	41
A.2.4	IOCTL_WDT_GETTIMEOUT:	41
A.2.5	IOCTL_WDT_SETTIMEOUT:.....	42
A.2.6	IOCTL_WDT_REBOOT:.....	42
A.3	Examples	42

Appendix B Fuse Specifications 45

B.1	Fuse Specifications.....	46
-----	--------------------------	----

Appendix C Pin Assignments 47

C.1	RS-232 Pin Assignments-TPC-31/TPC-61 (COM1,COM2).....	48
C.2	RS-485 Pin Assignment - TPC-31	48
C.3	RS422(COM3) Pin assignment - TPC-61	49

C.4	CAN Pin assignment - TPC-31	49
-----	-----------------------------------	----

Appendix D **Visual Settings** **51**

D.1	Font Setting	52
	Figure D.1 Font Setting	52
	Figure D.2 Small Font Setting	52
	Figure D.3 Change Font Setting.....	53
	Figure D.4 Small Font Display.....	53
D.2	Screen Rotation	54
	Figure D.5 Screen Rotation.....	54
	Figure D.6 Screen Rotation Options	54
	Figure D.7 90 Degrees Rotation.....	55
	Figure D.8 Portrait Rotation.....	55

Appendix E **TPC-31T /61T Update Guide** **57**

E.1	Updating Image & Bootloader	58
-----	-----------------------------------	----

Appendix F **Jumper & Dip Switch Setting List** **61**

F.1	TPC-31T Component construction.....	62
	F.1.1 EAMB-2201 Top side.....	62
F.2	Jumper Setting DIP Switch	63
F.3	TPC-61T Component construction.....	64
	F.3.1 EAMB-2200 Top side.....	64
	F.3.2 EAMB-2200 Bottom side.....	64
F.4	Jumper Setting DIP Switch	65
	F.4.1 SW3 UART Controlled Function	65

Chapter 1

General Information

This chapter gives background information for the TPC-31/61 series.

Sections include:

- Introduction
- Specifications
- LCD Specifications
- Touchscreen Specifications
- Power
- I/O Port Arrangement
- Mounting
- Dimensions and Cutout

1.1 Introduction

The TPC-31/61 series of touch panel computers consist of state-of-the-art HMI (Human Machine Interfaces). The 3.5"/5.7" operator interface combined with a RISC-based computing platform offers these key features:

- **Bright Display:**The high-brightness LCD display provides a clear interface.
- **Fanless:** By using a low power processor, the system does not have to rely on fans, which often are unreliable, and attracts dust.
- **Powerful Communication Capability:**
The TPC-31/61 series provides a powerful I/O interface for easy communication with other devices. The I/O interface includes serial ports, RS-485 port, Ethernet and USB. (Serial Port default as RS-232)
- **Windows CE Support:** Advantech offers platform support for Windows CE. The optional Windows CE operating system specifically for the TPC-31/61 is available for Windows CE application program builders.

1.2 Specifications

1.2.1 System Kernel

- **CPU:** TI Cortex-A8 AM3517 600 MHz
- **Memory:** DDR2 256MB on board
- **Storage Memory:** 512MB on board micro SD card;1Mb FRAM for Data back-up
- **Ethernet:** 10/100Base-T x 1
- **Watchdog Timer:** Programmable as 250 ms, 500 ms, 1 second
- **SD Slot:** Secure Digital Slot

1.2.2 I/O Ports

- TPC-31T:
RS-232/RS-485 X1 with auto data flow control, USB 2.0(Host) x 1, CAN bus x 1
- TPC-61T:
RS-232 x 2 (COM1,2)RS-422/RS-485 x1 (COM 3) with auto data flow control, USB2.0 (Host) x 1, USB2.0 (Client) x 1

1.2.3 Storage

TPC-31/61 panel computers provide two methods for storage. One is the on-board 512MB micro SD card and the other one is an external SD card.

1.2.4 Safety and Environment

Safety

- FCC Class A, CE, BSMI, UL certified
- The front bezel is compliant with NEMA 4/ IP65

Environment

- **Operating Temperature:** 0~50°C (32 ~ 122°F)
- **Storage Temperature:** -20 ~ 60°C (-4 ~ 140°F)
- **Humidity:** 10~95% @ 40°C relative humidity (non-condensing)
- **Vibration:** 1 Grms (Random, Operating)

1.2.5 LCD Specifications

TPC-31/61	
Display Type	TFT LCD
Size (diagonal)	3.5"/5.7"
Maximum Resolution	320 x 240 (QVGA)
Maximum Colors	64K
Viewing Angle	120/110; 160/140
Luminance (cd / m2)	450/800
Contrast Ratio	300:1 / 800:1
Backlight	LED
Backlight MTBF	30000 / 50000hrs

1.2.6 Touchscreen Specifications

Touch Type	Resistive
Base Glass Construction	Glass
Resolution	Continuous
Light Transmission	80% typical
Software Driver	Windows CE (embedded)
Durability	1 million times with a 8 mm diameter silicone rubber finger

Note! *There is no pointer/cursor shown using the touch screen. The cursor only appears when closing or minimizing the window.*



1.2.7 Power

- **Input Voltage:** 18~32 V_{DC}
- **Maximum Current:** 1 A

1.2.8 I/O Ports Arrangement

TPC-31T provides 1 serial port, 1 Ethernet LAN port and 1 USB port. While TPC-61T provides 3 serial ports, 1 Ethernet LAN, 2 USB port(1xHost, 1xClient).



Figure 1.1 TPC-31T I/O Ports Arrangement



Figure 1.2 TPC-61T I/O Ports Arrangement

1.3 Panel Mounting

There is an adhesive waterproof gasket on the front bezel. Make sure the waterproof gasket is in position before installing a TPC-31/61 panel computer into the panel opening.

TPC-31T:

1. Install the panel computer into the panel opening.
2. Find the mount bracket, four short screws and four long screws in the accessory pack. Fix the mount bracket on the rear cover with four short screws and then fasten the long screws. These screws will then push the mounting panel and fix the unit. The mounting panel thickness is suggested to be less than 3.5 mm (0.137 inch).

TPC-61T:

1. Install the TPC into the panel opening.
2. Find the six clamps and six long screws in the accessory pack. Hook the clamps to the holes around the four sides of the bezel. Insert the screws into every clamp and fasten them. These screws will push the mounting panel and fix the unit.
3. The suggested mounting panel thickness is less than 6 mm (0.236").

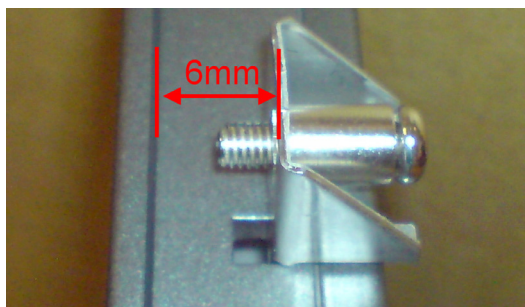


Figure 1.3 Panel Mounting

1.4 Dimensions and Cutout

- **Weight:**
TPC-31T: 0.25 kg (0.55 lbs)
TPC-61T: 0.8 kg (1.76 lb)
- **Dimensions (WxHxD):**
TPC-31T: 120.79 x 85.5 x 26.5 mm (4.76" x 3.37" x 1.04")
TPC-61T: 195 x 148 x 44.4 mm (7.68" x 5.83" x 1.75")
- **Cutout:**
TPC-31T: 115 x 79.5 mm
TPC-61T: 189 x 142 mm

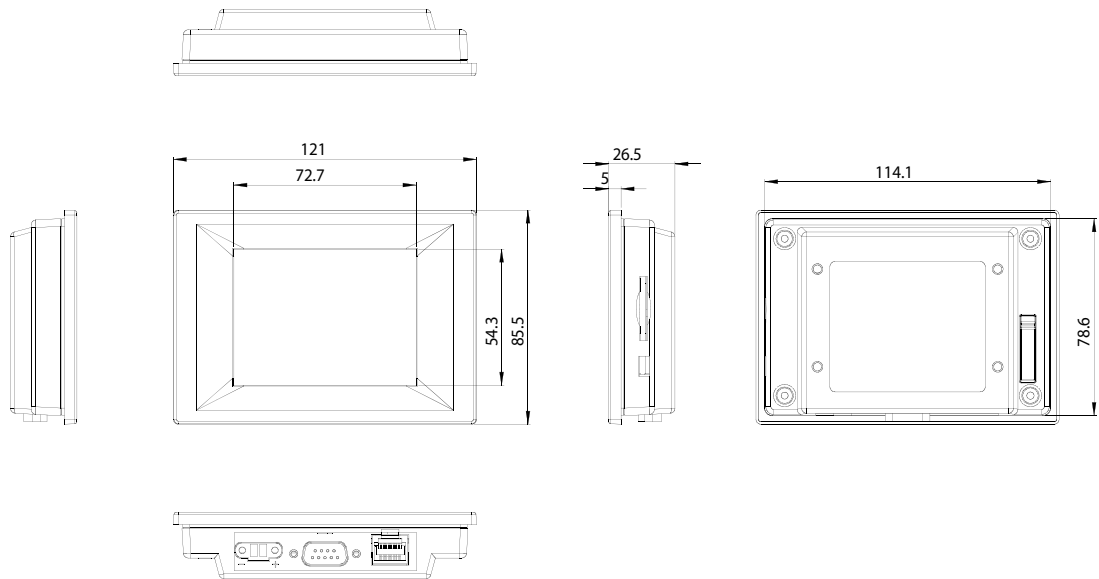


Figure 1.4 TPC-31T Dimensions and Cutout

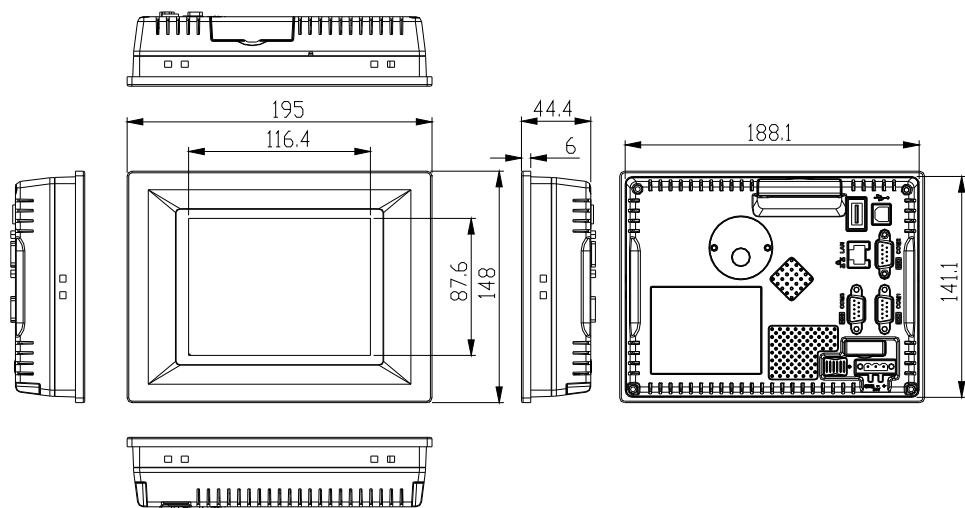


Figure 1.5 TPC-61T Dimensions and Cutout

Chapter 2

System Setup

This chapter provides a brief explanation for operating the TPC-31/61.

2.1 System Setup

You can quickly get up and running by following the step-by-step instructions below.

1. Open the package. check the packing list at the beginning of this manual to make sure every item is there.
2. Connect the power connector to the 18~32 V_{DC} power lines. The power lines can either be from some power adapter or an in-house power source.

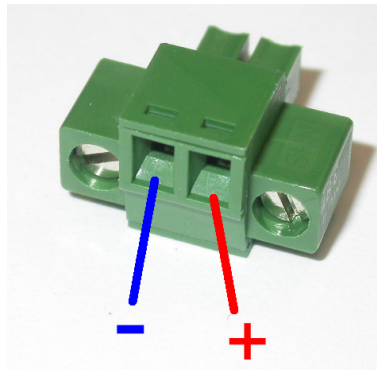


Figure 2.1 Power Connector and Power Lines



Figure 2.2 Pin Assignment on the Power Receptor

Warning! *The system may be damaged when the power is turned on if the power source is not connected to the correct pins.*



3. Plug the power lines into the system power receptor. Thus the system will turn on.



Figure 2.3 Power Line into the Power Receptor

4. Turn on the System
5. Calibrate the touchscreen.

Chapter 3

System Tuning

Sections include:

- LCD Contrast Tuning
- Touchscreen Calibration
- Buzzer Setting

3.1 LCD Tuning

The display settings let you control the backlight. Backlight provides a screen saving function. The backlight can be automatically turned off when the device is no longer used to lengthen the device life. Go to “Start” -> “Setting” -> “Control Panel” -> “Display” as shown in the Figure below.

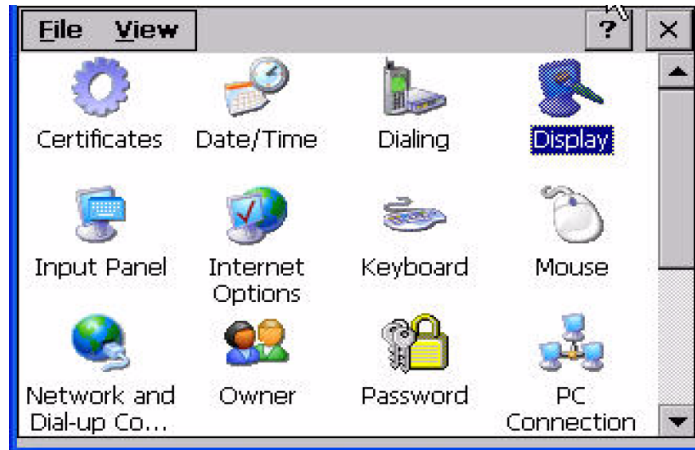


Figure 3.1 Display

To set the time to automatically turn off, tick the check box “turn off backlight” and set the time to elapse by inputting a number in the edit box.

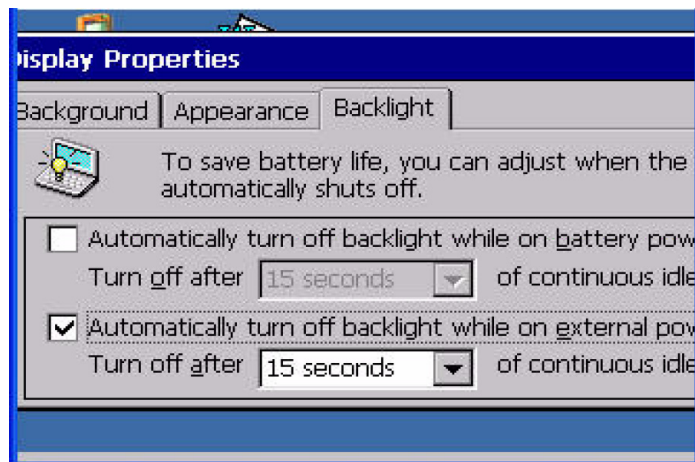


Figure 3.2 Display Properties

3.2 Touchscreen Calibration

You can calibrate the touchscreen through “Start” -> “Setting” -> “Control Panel” -> “Stylus” as shown in the Figure below.



Figure 3.3 Style

The window of the stylus properties will display after you click the stylus. There are two tabs in this screen: Double-Tap and Calibration. Double-Tap is used to record the time period between the two taps when double-tapping in Windows CE. Calibration is for users to calibrate the touch screen.



Figure 3.4 Stylus Properties

Press “Calibration” and then click “Recalibrate” to calibrate the touch screen as shown below. A cross will appear on the screen in the order: center point, upper-left, lower-left, lower-right, and upper-right. Use the stylus to tap the center of the cross until the cross moves to next location.

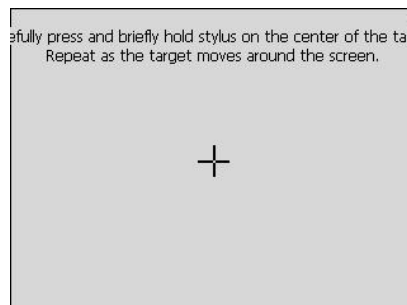


Figure 3.5 Touchscreen Calibration

3.3 Buzzer Setting

TPC-31/61 panel computers provide a buzzer setting in Windows CE. This function enables a beep when users use the touch screen. To enable/ disable this functionality, open “Start” -> “Setting” -> “Control Panel” -> “Volume & Sounds” as shown in Figure 3.6.



Figure 3.6 Volume & Sounds Settings 1

As shown in Figure 3.7, you can enable/disable this functionality.



Figure 3.7 Volume & Sounds Settings 2

Chapter 4

Windows CE

Sections include:

- TPC Utilities
- Networking
- Application Program Development

4.1 Windows CE

The TPC-31/61 operator interface terminals are designed for Windows CE. Windows CE is a compact operating system that occupies less storage space and use less system resources compared with other operating systems. By its modular nature, it is possible to choose the functions that are useful for a specific application. This not only reduced the system resources required, it also reduces start-up time. In the field of industrial automation or for operator interface terminals, this is an appealing feature because the impact of downtime is minimized. Furthermore, the small storage space required makes it possible to install the operating system on a reliable solid-state disk.

Note! *The default version of Windows CE in TPC-31/ 61 series is the English version. Contact your local Advantech representative for local language support.*



Figure 4.1 Windows CE on TPC-31/61

Note! *The TPC-31/61 series also provides Remote Desktop Connection in Windows CE but the maximum resolution supported is only 320 x 240.*



4.2 TPC Utilities

There are several utilities built into Windows CE in the TPC series.

4.2.1 Soft-Keyboard

The TPC-31/61 series also has a small-sized operator interface. Since it is not convenient to attach a keyboard to such a small device, a software keyboard is built into the standard Windows CE OS. Upon boot-up, a small keyboard icon will appear on the status bar. Tap this icon with the stylus to activate/hide this Soft-keyboard.

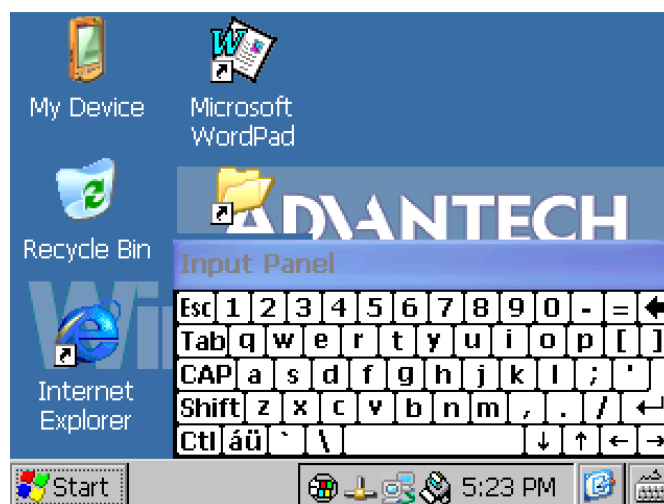


Figure 4.2 Soft-Keyboard

4.2.2 TPC Configuration

The TPC-31/61 series provides an integrated utility to configure the basic settings of the device. Execute it by clicking the TPC Configurator icon on the desktop. Navigate the configuration by tapping the four tab pages for: general, network, watchdog and misc.

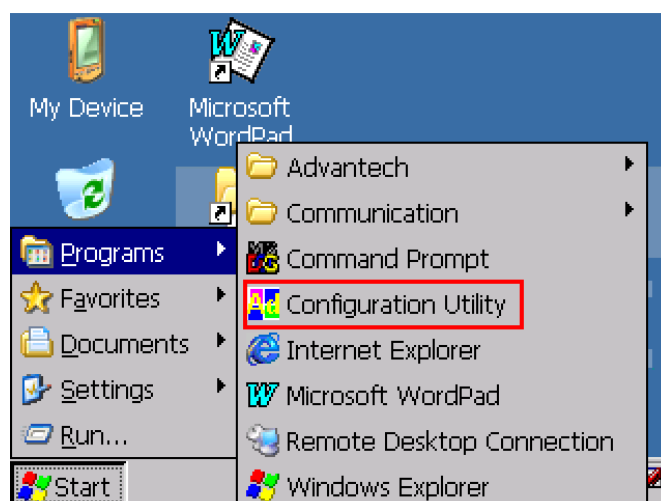


Figure 4.3 TPC Configurator

General Page

This page displays the basic system information. There are two main parts: system and memory. The system shows the OS image version and CPU type. The second part includes total capacity, usage and currently available capacity of the disk and the memory.

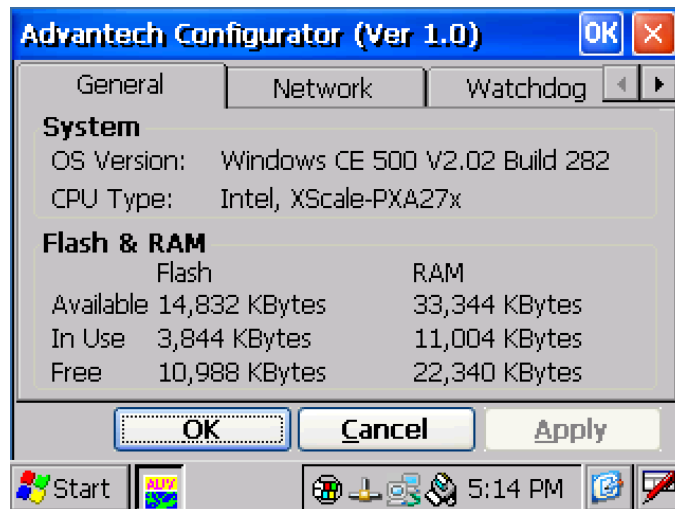


Figure 4.4 General

Network

This page shows information about the active network adapter. You can select the network adapter from the combo box as shown in Figure 4.5. Release the current IP and retrieve the new IP through the provided button, "Renew". Use the "Ping" button to ping a specified IP address if you wish to test the connection.



Figure 4.5 Network

You can get more detailed IP information through “Advanced Network”. The information contains the default gateway, DHCP server, WINS and DNS server address as shown in Figure 4.6 below.

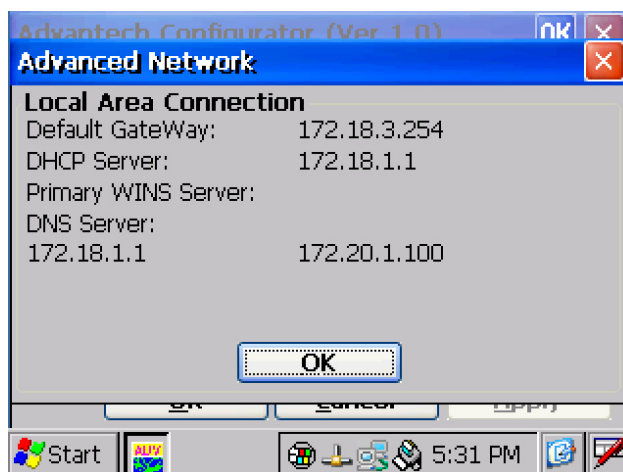


Figure 4.6 Advanced Network

Watchdog

Watchdog is a function to let the device automatically reset if a program does not respond in time. This prevents system crashes and hangs to stop your critical applications, as the watchdog will automatically restart the machine when required.

Set the response time through the combo box as shown below. The timer is the period that the watchdog will wait for a response.



Figure 4.7 Watchdog Setting

Only when you select a time span and enable the watchdog, will the response time be effective. When the watchdog is enabled and the "Test" button is clicked, the NO resetting signal will be periodically sent to the watchdog hardware onboard. The watchdog will suppose the machine to be deadlocked and REBOOT it after the watchdog response time. If the machine reboots as expected after the watchdog response time, the watchdog is proved to be working properly.

Misc

There are several functions provided in the Misc page as shown in the figure below.

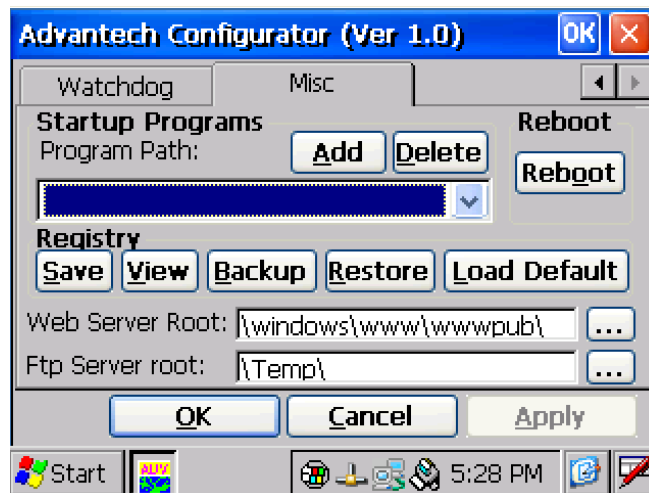


Figure 4.8 Misc Page

Startup Programs: You can easily set the startup programs without editing. The programs listed in the combo box will be automatically executed after the system has successfully booted. Click the “Add” button to insert a file to the startup. If you would like to remove the file from the startup or the combo box, please click “Delete”.

Note! Do NOT try to insert a NON-executable file into the startup program.



Reboot: You can reboot TPC-31/61 panel computers by clicking the “Reboot” button. Once this button is clicked, the dialog below will be displayed.

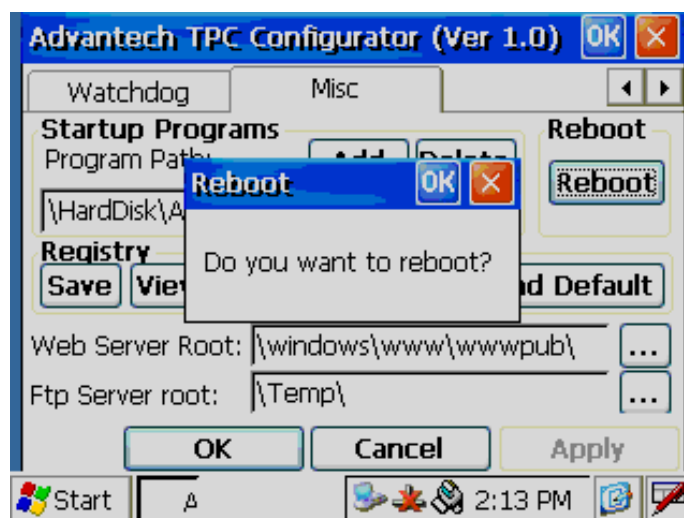


Figure 4.9 Reboot Machine

There are two additional ways to reboot the system, clicking a small machine icon on the status bar and executing a command, `reboot.exe`, through a command line program.

Registry: You can click the “Save” button to save the registry to a solid state disk, and click the “View” button to view, edit, create, or delete registry information. You also can backup or restore the registry setting by clicking the backup or restore button.

Note! *It is not allowed to backup and restore over different image versions.*

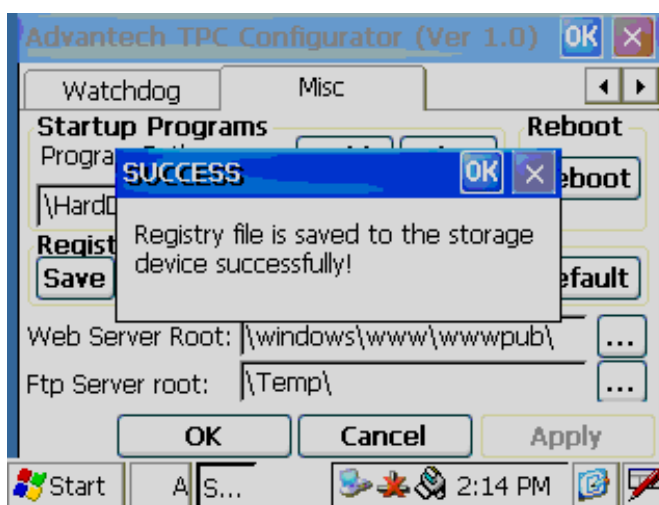


Figure 4.10 Registry Saving Success

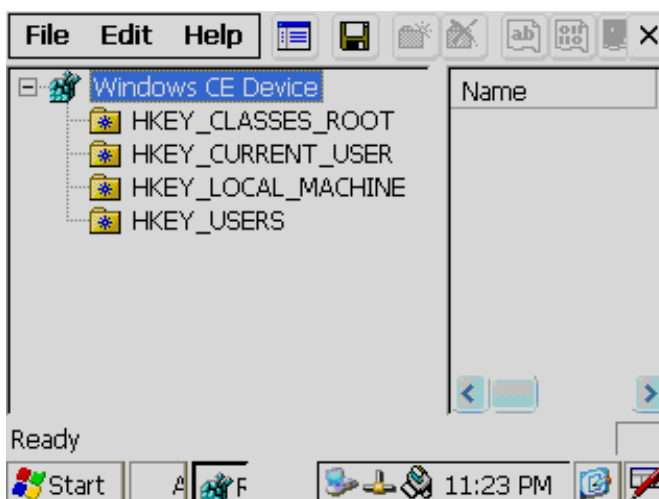


Figure 4.11 Registry Editor

Web Server Root: Input the root path of the web server here. The root path will only be effective after the machine has been rebooted.

FTP Server Root: Input the root path of the ftp server here. The root path will only be effective after the machine has been rebooted.

4.2.3 Advantech Tools

There are several useful tools in the Advantech program. Go to “Start” -> “Programs” -> “Advantech” to run the tools as shown in Figure 4.12. The tools include “ActiveSync”, “Registry Editor”, “Registry Saver”, “DiagAnywhere”, “NotepadPlus”, “System Font Setting” and “TPC Version Information”.

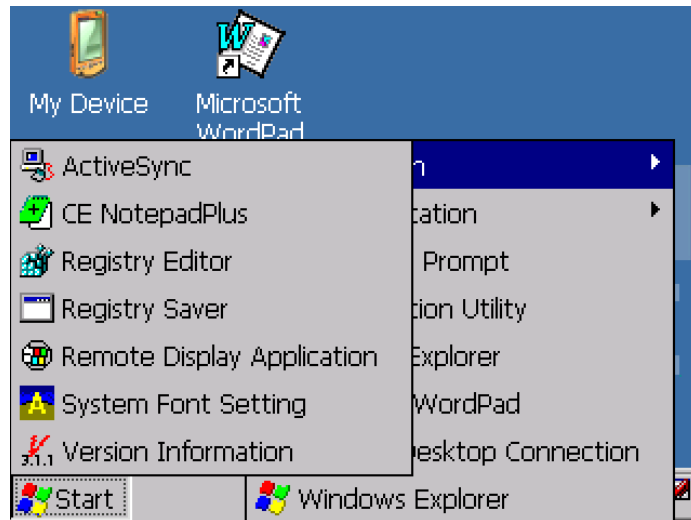


Figure 4.12 Advantech Tools

ActiveSync

This program synchronizes data and monitors the connection between TPC-31/61 panel computers and their host computer. By default, it will be executed automatically when you want to establish a connection to a target device with ActiveSync.

Registry Editor

When Registry Editor is executed as shown in the Figure 4.11, you can use this program to view, edit, enter, delete or save registry data.

Registry Saver

When Registry Saver is executed, the system registry will be saved. Also, you can execute it in a command-line environment to save the registry like “regsave.exe” or “regsave.exe -s” for the silence mode.

NotepadPlus

NotepadPlus is a text editor as shown in Figure 4.17.

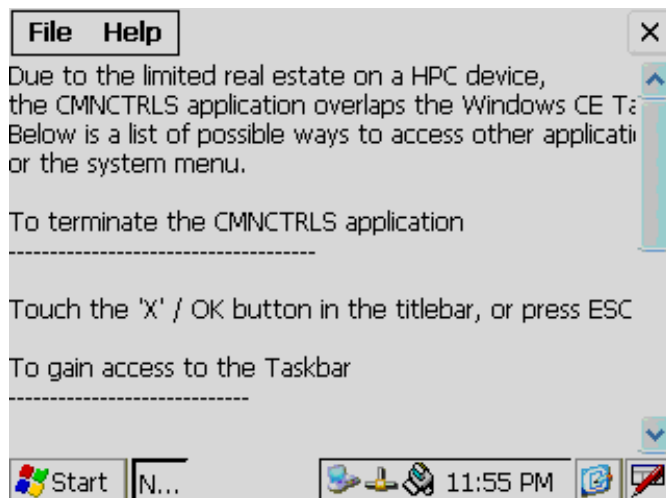


Figure 4.13 NotepadPlus

TPC Configurator

TPC Configurator is an integrated utility to configure the basic settings of the panel computer. Refer to section 4.1.2.

TPC Version Information

TPC Version Information shows the version information of the operation system in the TPC-31/61 as shown in Figure 4.18.

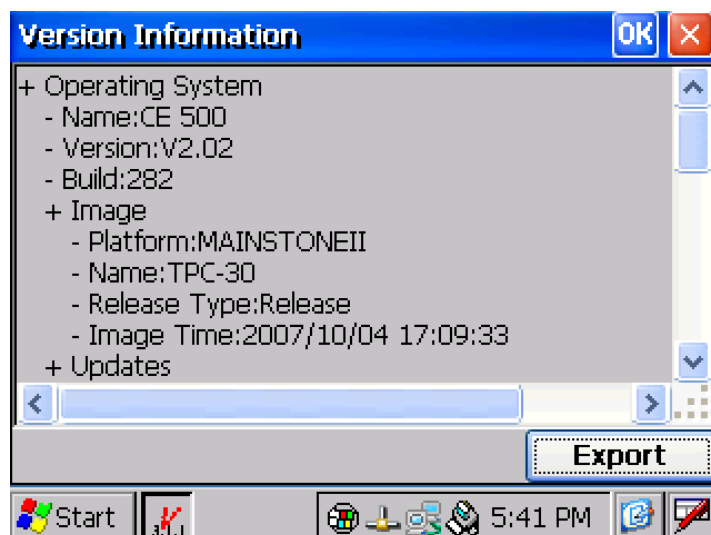


Figure 4.14 TPC Version Information

4.2.4 Other Utilities

There are other utilities provided in the panel computer. These utilities are command-line executed programs that do not have a graphical user interface. Type the command names shown below in the command-line.

RegSave.exe [-s]:

Saves registry settings. If you use "RegSave.exe -s", no message box is displayed whether you are successful or fail.

Reboot.exe:

Saves the registry settings and reboots the panel computer.

Screen.exe [on/off]:

Turns the display on/off. Use "Screen.exe on" to turn on and "Screen.exe off" to turn off the display.

lesample.exe [-n] [-f] [ip address/ folder name]:

Open the Internet Explorer. Use "lesample.exe -n" to close the scroll bar. Use "lesamples.exe -f" to active the full screen. The three parameters can be blank.

4.3 Networking

4.3.1 Network via Ethernet

This section shows how to configure the Ethernet port of the TPC series properly. The procedure is listed below step by step.

Note! LAN transmission will crash when speed mode be changed.



1. Press Start in the task bar of Windows and select "Setting" -> "Networking and Dial-up connections".

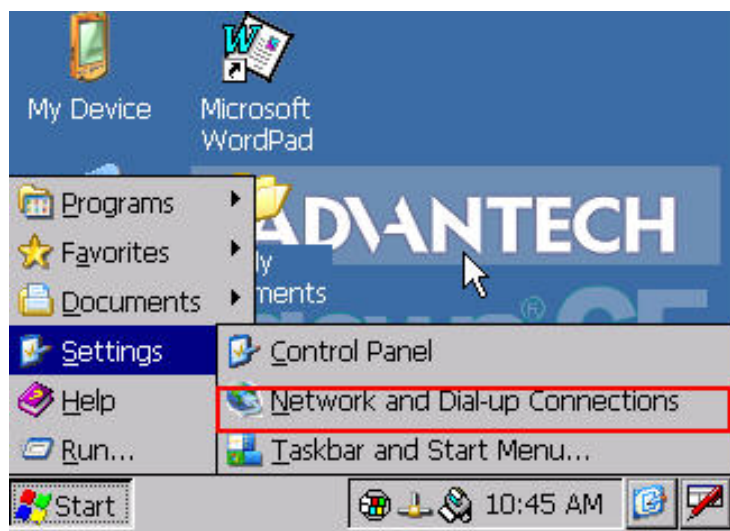


Figure 4.15 Network and Dial-up Connections

2. A window that shows all available connections will pop up. Double click the icon that has the connection you want to configure. For example, double click DM9CE1 icon to configure.

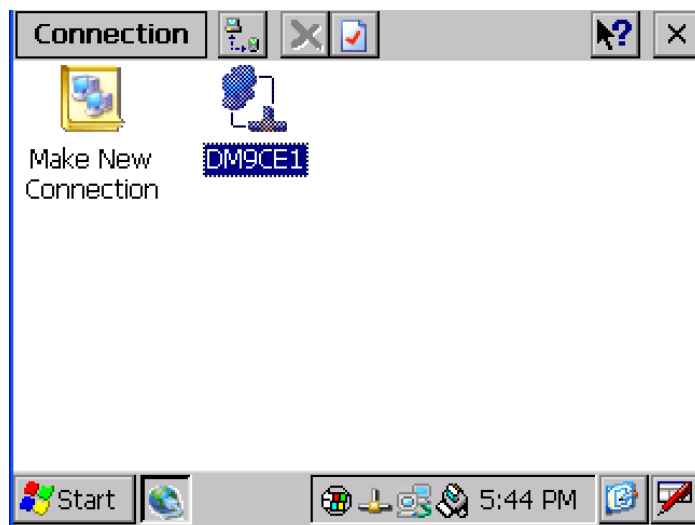


Figure 4.16 Selected Connection

3. Select the "IP Address" tab.

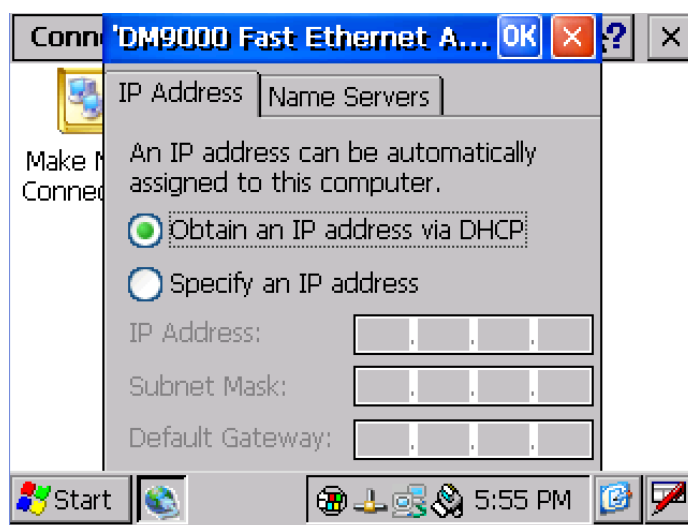


Figure 4.17 Setting IP Address

4. Select the “Name Server” tab.

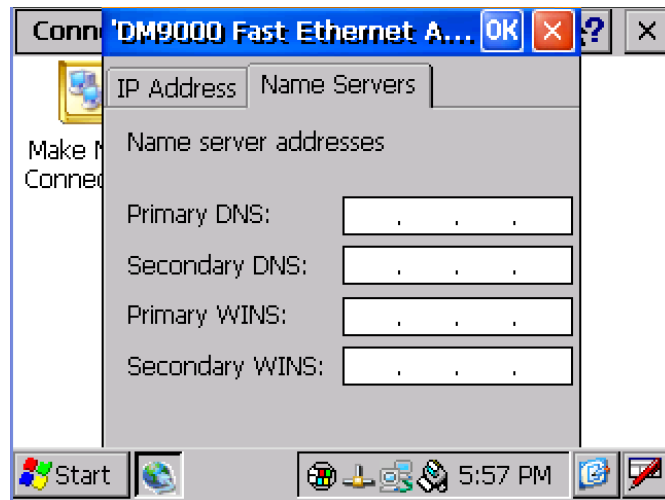


Figure 4.18 Setting Name Servers

Note! Do NOT click the Next button at this time.



5. Press “Start” in of task bar of Windows and select “Run”. Execute “regsave” to save the registry settings to a storage card.

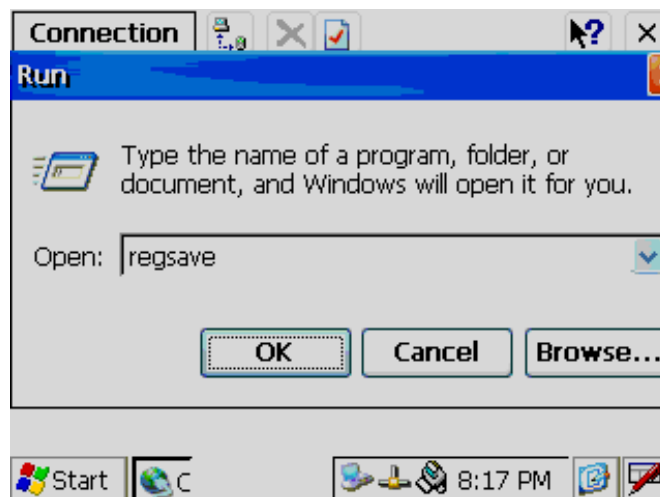


Figure 4.19 Save Registry

4.3.2 Network via Serial Port

This section introduces how to setup the connection between the TPC series and a host PC via Microsoft ActiveSync.

ActiveSync Setting Procedure

Insert the TPC CD into the CD-ROM of the host PC

Install the TPC software development kit for eVC++.

Install Microsoft ActiveSync.

Connect the host computer and TPC with a null modem cable (included in the package). Make sure the connection is solid on both RS-232 Serial ports.

Setup the communication environment of the TPC and the host

Setup the Communication Environment of TPC

Configure COM1 on the TPC. Press "Start" in Windows and select "Setting -> "Control Panel"

Click the icon "PC Connection"



Figure 4.20 PC Connection

Click 'change...' to select the COM port- serial 1. In this example, we use COM1 of TPC to connect with COM1 of the host.

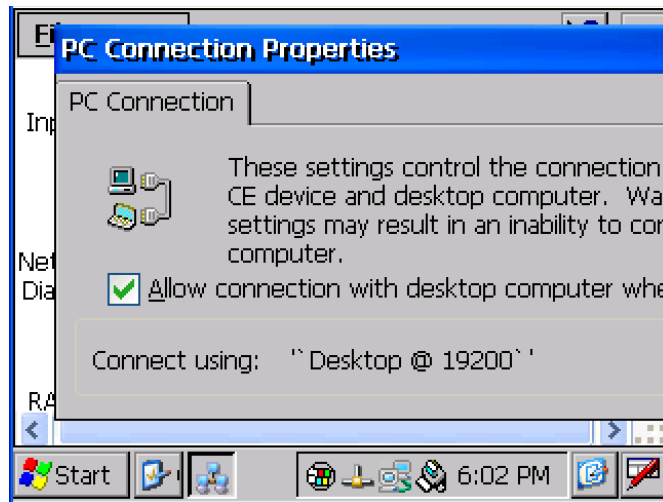


Figure 4.21 PC Connection Properties

Check the COM box and select your desired port from the list.



Figure 4.22 Change Connection

Press the 'enter' symbol on the keyboard to confirm the change.

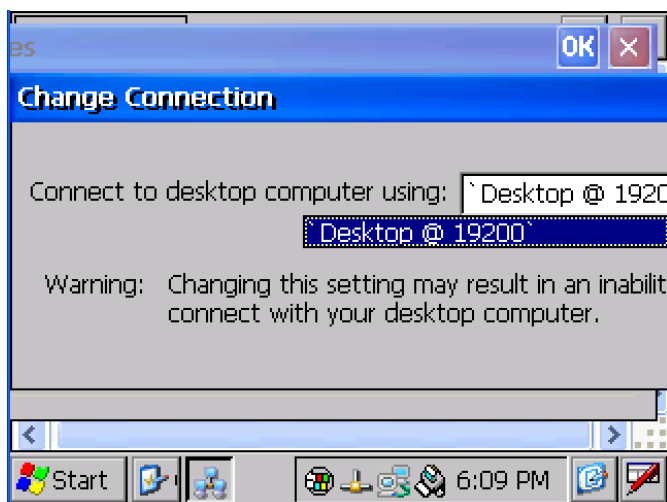


Figure 4.23 Change Connection

You can find the change is active. The connection is via serial1 - COM1.

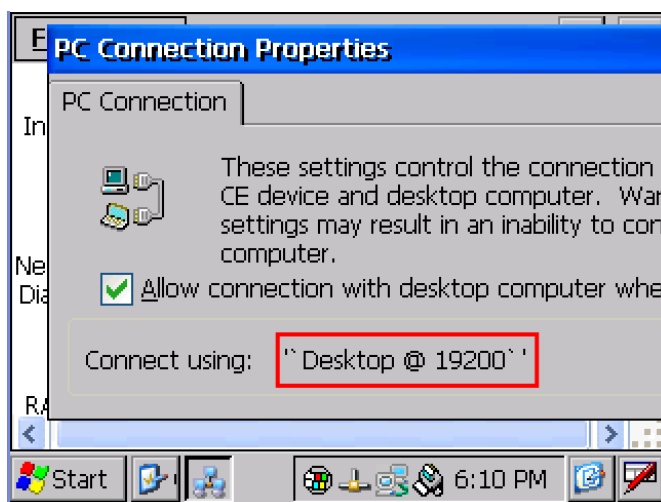


Figure 4.24 COM1 Set

Setting the Communication Environment of the Host

Double click the icon ActiveSync on your host computer.



Figure 4.25 Microsoft ActiveSync

Select "File" -> "Connection Settings"

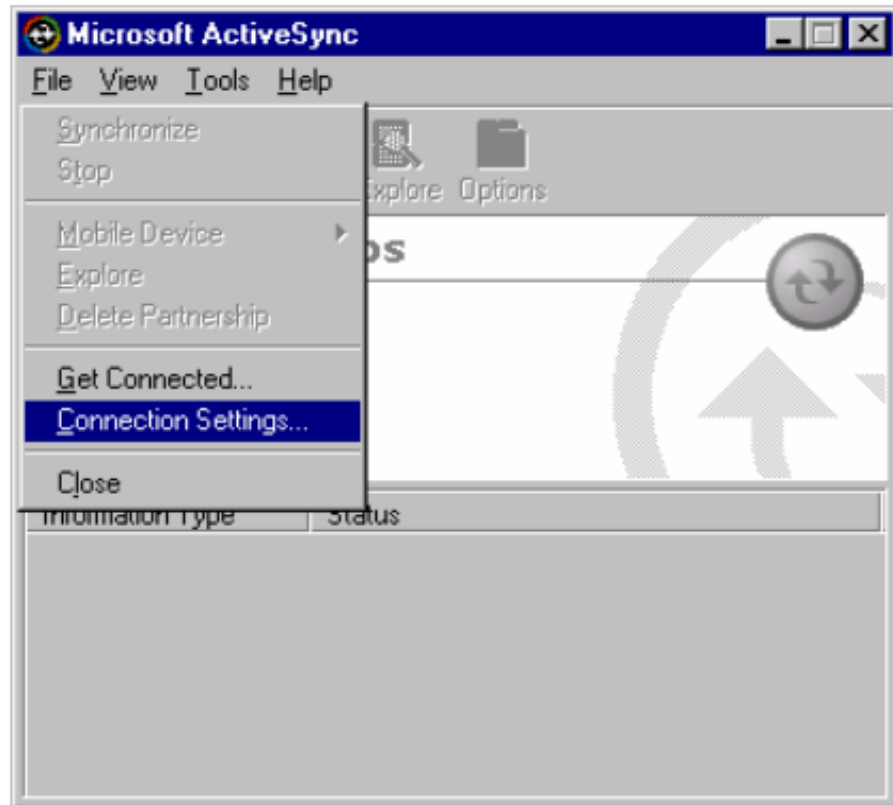


Figure 4.26 Select Connection Setting

Configure the connection setting.



Figure 4.27 Configure Connection Setting

A window will pop up after you press “Get Connected”.



Figure 4.28 Get Connected

Run “repllog.exe” on the TPC.

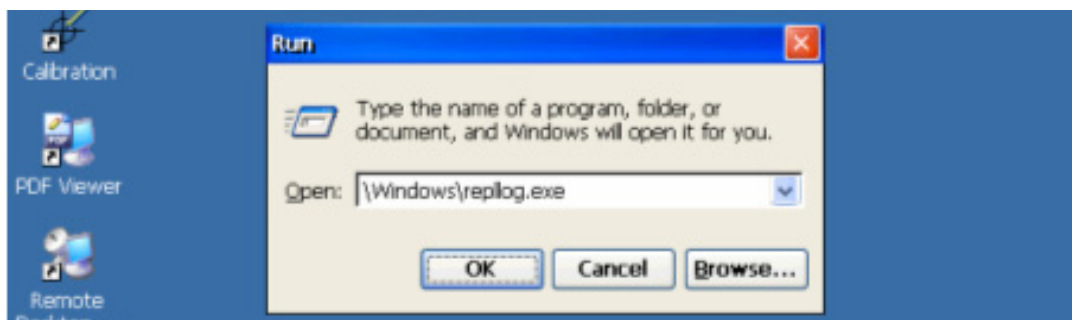


Figure 4.29 Run Repllog.exe on the TPC

Press the “Next” button on your host computer.

The message shown below will show on the TPC once the TPC and the host PC are connected.

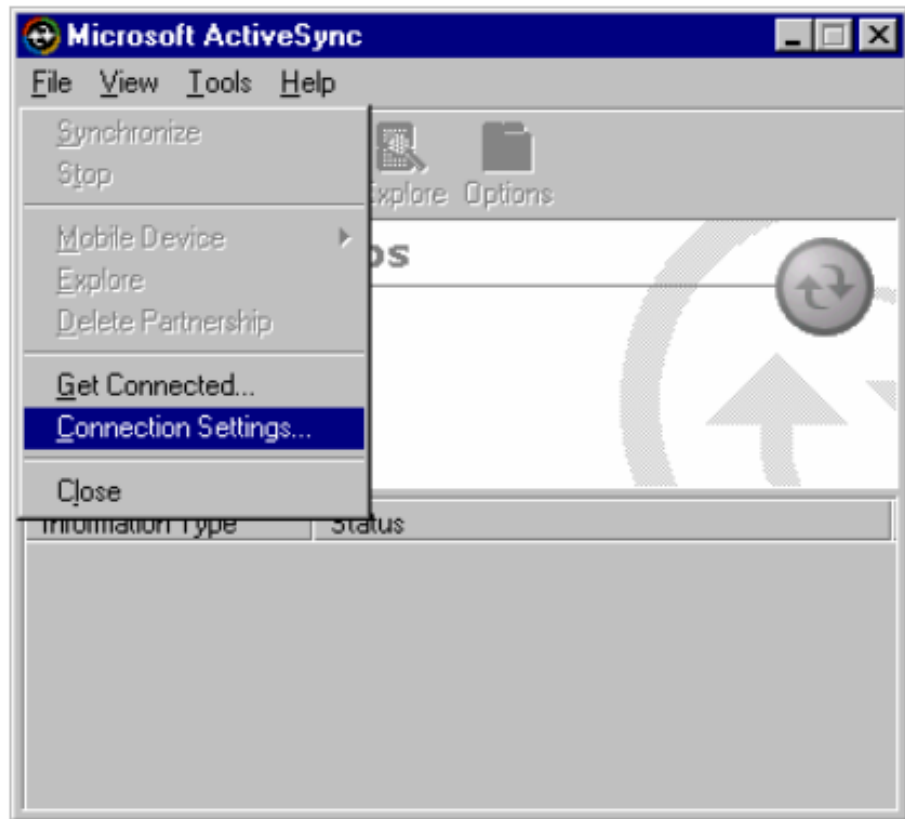


Figure 4.30 Connection on the TPC

A window will pop up as shown below on the host computer, once the TPC and the host PC are connected. Select “No” and then press “Next”.

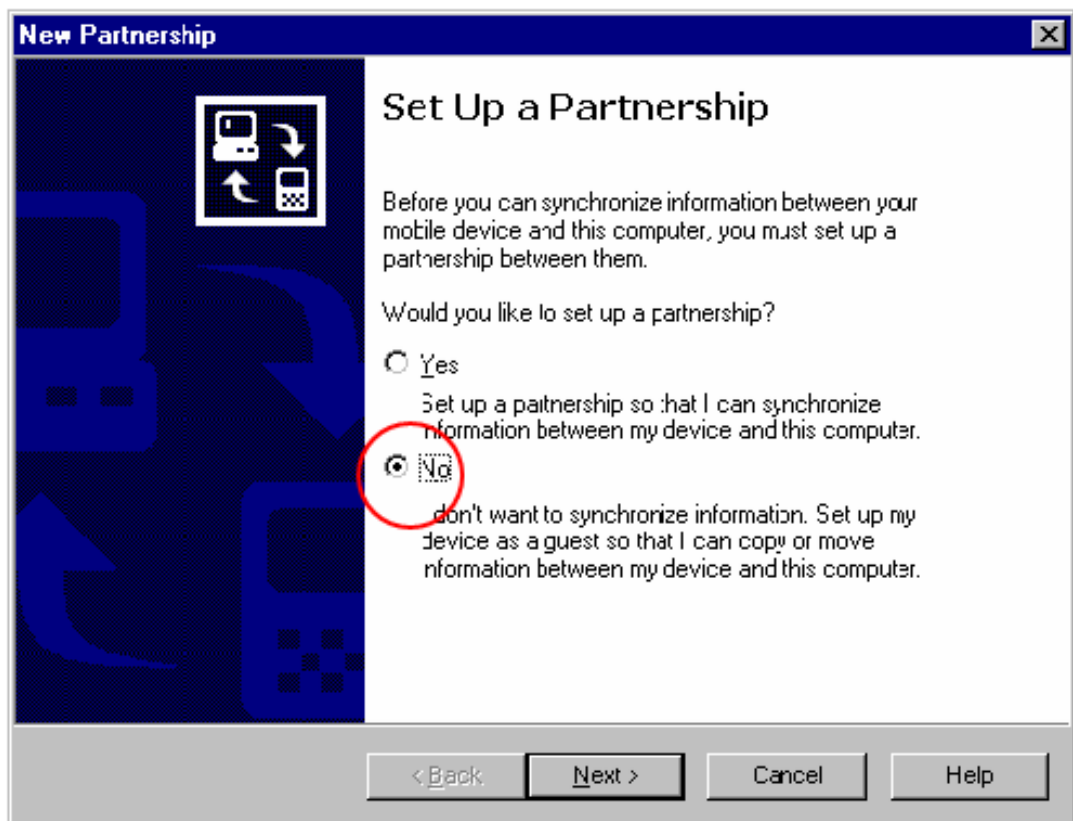


Figure 4.31 Connection on the Host PC

Select “Explore” in the Microsoft ActiveSync window, the window, Mobile Device, will pop up to display the file resources and information of TPC. For example, you could click the icon “My documents” to see the content of storage in TPC.

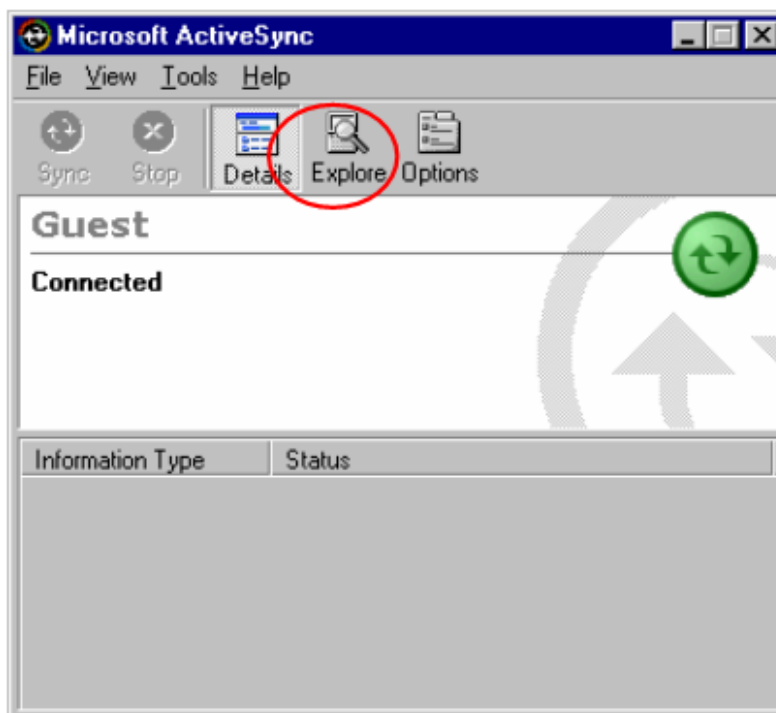


Figure 4.32 Explore the TPC

4.4 Application Program Development

4.4.1 System Requirements for Developers

These are the requirements to run Microsoft eMbedded Visual C++ 4.0.

- A desktop computer with a Pentium II-class processor, 450 MHz or faster.
- Microsoft Windows 2000 Professional SP4, Microsoft Windows 2000 Server SP2, or Microsoft Windows XP Professional.
- 96 MB (128 MB recommended) memory for Windows 2000 Professional or Windows XP Professional. 192 MB (256 MB recommended) memory for Windows 2000 Server.
- CD-ROM drive.
- VGA or higher-resolution monitor. A Super VGA (800 x 660 or larger) monitor is recommended.
- Mouse or compatible pointing device.
- 200 MB hard disk space.

Note! *If you choose to install the Common files or Microsoft eMbedded Visual C++ 4.0 on a partition other than the system partition, the figure representing the amount of space required reflects only the amount of space for files being installed on that non-system partition. It does not reflect the total amount of space required to install the entire product. This is because some files must be installed on the system partition, regardless of where other files are installed.*



4.4.2 Building Windows CE Runtime

Build the Windows CE runtime with the eMbedded Visual tools. This section demonstrates step by step how to develop a custom application.

1. Install Microsoft eMbedded Visual C++: The Microsoft eMbedded Visual C++ tool is a desktop development environment for creating applications and system components for Windows CE .NET-powered devices. This version features new capabilities such as C++ exception handling, Run Time Type Information (RTTI), and a plethora of new debugger functionalities. Before you begin to develop your application, you must install Microsoft eMbedded Visual C++ first
2. Insert the TPC CD into the CD-ROM in the host PC.
3. Install the TPC Software Development Kit for eMbedded Visual C++ from the support CD-ROM.
4. Install Microsoft ActiveSync from the support CD-ROM
5. Build the connection between the host and TPC via ActiveSync. For further information about ActiveSync, please refer to section 4.2.2.
6. Execute eMbedded Visual C++.
7. Select "File" -> "New" to open a new project. Select your project type in the left side of the window and enter the new project name/ location in the right side of the window.

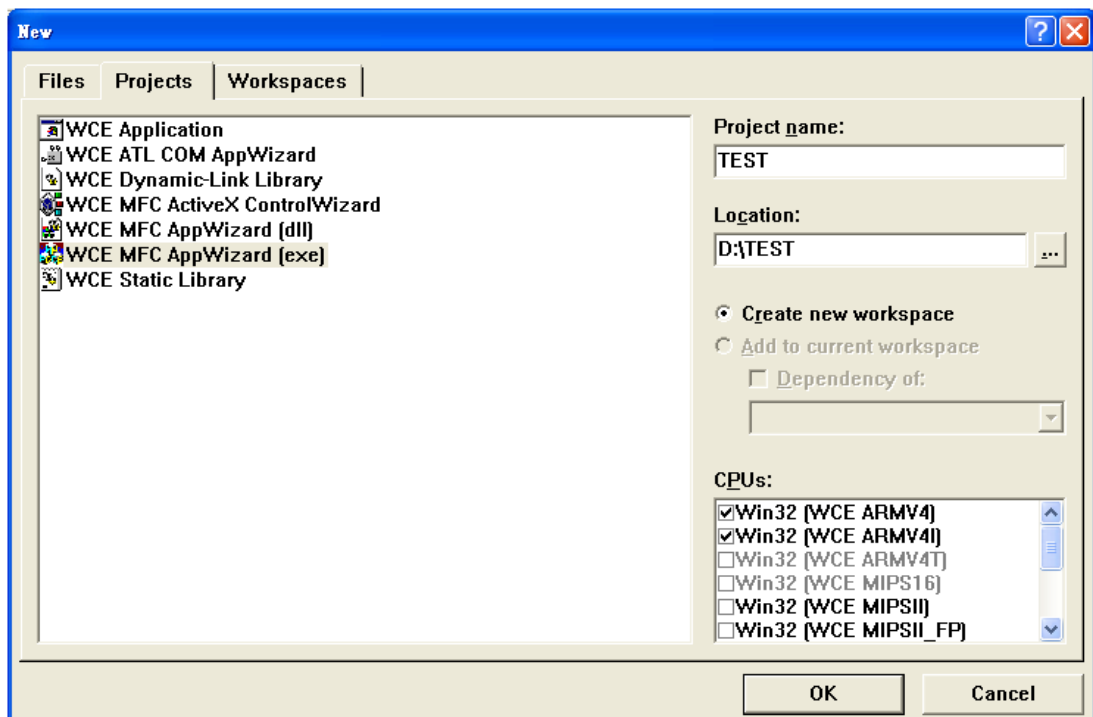


Figure 4.33 Starting a New Project

Note! The selected CPU type must be Win32 (WCE ARM V4) or Win32 (WCE ARMV4I).



Select “ADVTPC” in the main window of embedded Visual C++.

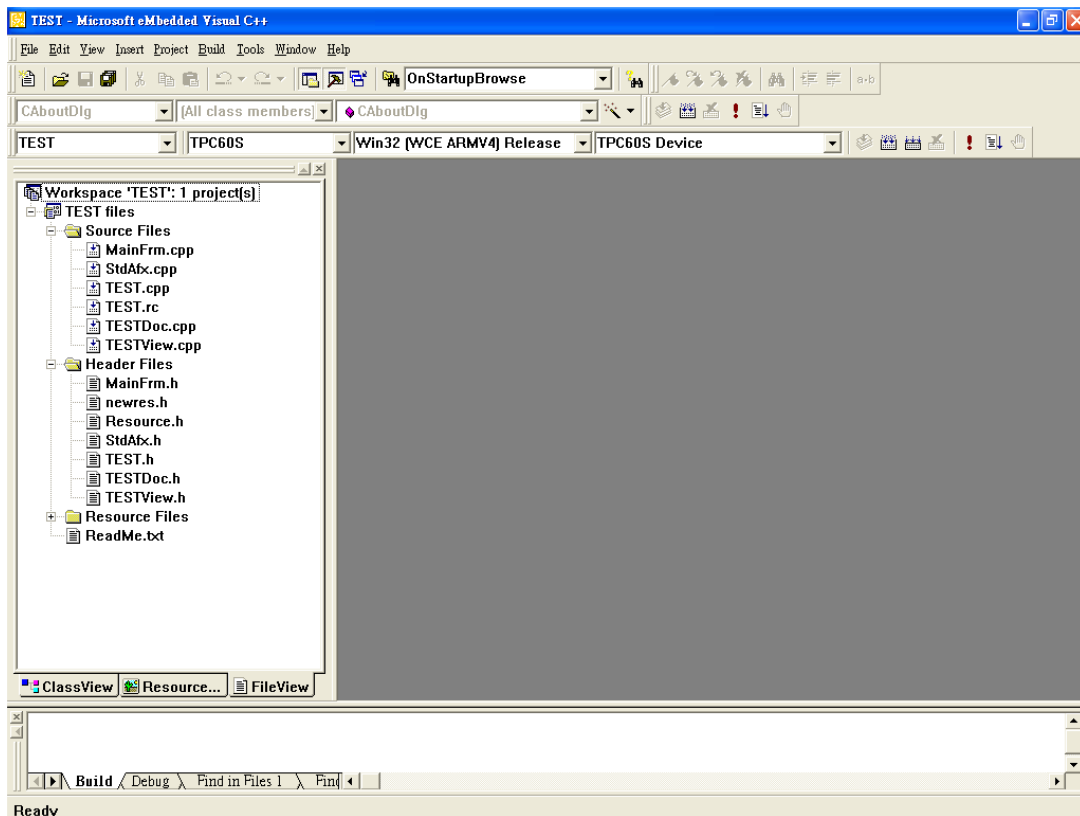


Figure 4.34 Selecting

After you complete the configuration procedure, you can start to develop your application. Press “Build” to compile your program to a .exe file and download it to TPC.

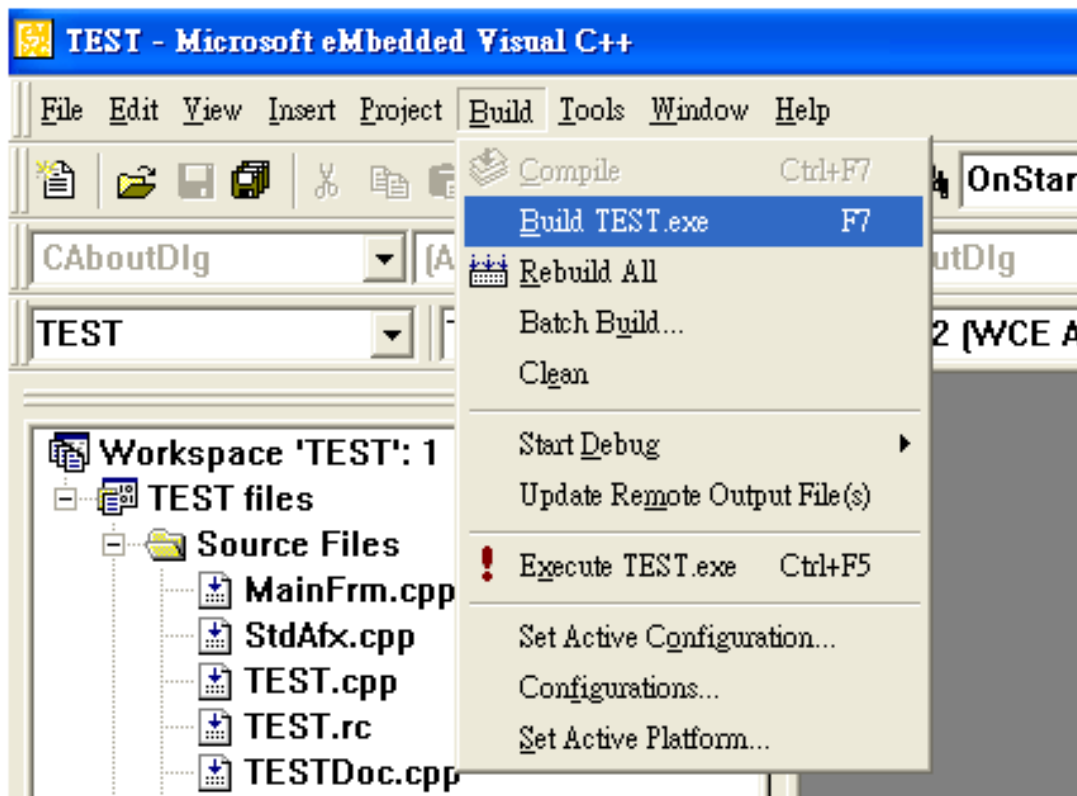


Figure 4.35 Compiling Your Program

Appendix **A**

Watchdog Timer Programming

There is a built-in watchdog timer in the TPC-31/61 series. You can access it through the WIN32 API. TPC-31/61 panel computers provide a WDT driver to allow users to enable/disable the Watchdog timer. The driver name is "WDT1:". Programmers must open this driver before using the resources. Then programmers can use Device IO Control functions to enable/disable Watchdog timer. The introduction below includes the Device IO Control, the definition of the parameter and an example.

A.1 Device IO Control

This function sends a control code directly to a specified device driver, causing the corresponding device to perform the specified operation.

```
BOOL DeviceIoControl(  
HANDLE hDevice,  
DWORD dwIoControlCode,  
LPVOID lpInBuffer,  
DWORD nInBufferSize,  
LPVOID lpOutBuffer,  
DWORD nOutBufferSize,  
LPDWORD lpBytesReturned,  
LPOVERLAPPED lpOverlapped );
```

Parameters:

- hDevice
[in] Handle to the device that is to perform the operation. Call the CreateFile function to obtain a device handle.
- dwIoControlCode
[in] Specifies the control code for the operation. This value identifies the specific operation to be performed and the type of device on which the operation is to be performed. No specific values are defined for the dwIoControlCode parameter. However, the writer of a custom device driver can define IOCTL_XXXX control codes, per the CTL_CODE macro. These control codes can then be advertised, and an application can use these control codes with DeviceIoControl to perform driver-specific functions.
- lpInBuffer
[in] Long pointer to a buffer that contains the data required to perform the operation. This parameter can be NULL if the dwIoControlCode parameter specifies an operation that does not require input data.
- nInBufferSize
[in] Size, in bytes, of the buffer pointed to by lpInBuffer.
- lpOutBuffer
[out] Long pointer to a buffer that receives the operation's output data. This parameter can be NULL if the dwIoControlCode parameter specifies an operation that does not produce output data.
- nOutBufferSize
[in] Size, in bytes, of the buffer pointed to by lpOutBuffer.
- lpBytesReturned
[out] Long pointer to a variable that receives the size, in bytes, of the data stored into the buffer pointed to by lpOutBuffer. The lpBytesReturned parameter cannot be NULL. Even when an operation produces no output data, and lpOutBuffer can be NULL, the DeviceIoControl function makes use of the variable pointed to by lpBytesReturned. After such an operation, the value of the variable is without meaning.

- IpOverlapped
[in] Ignored; set to NULL.
- Return Values
Nonzero indicates success. Zero indicates failure. To get extended error information, call GetLastError.

A.2 How to Use the Control Code

There are 6 control codes for the operation codes in the WDT driver.

A.2.1 IOCTL_WDT_ENABLE:

Enables the Watchdog timer on your application. By default, if the Watchdog timer is enabled, the WDT driver will automatically trigger itself after the specified period and your application does not need to trigger the Watchdog timer in this situation.

lpInBuffer : unused.

nInBufferSize: unused.

lpOutBuffer: unused.

nOutBufferSize: unused.

A.2.2 IOCTL_WDT_DISABLE:

Disables the Watchdog time on your application.

lpInBuffer : unused.

nInBufferSize: unused.

lpOutBuffer: unused.

nOutBufferSize: unused.

A.2.3 IOCTL_WDT_STROBE:

Triggers the Watchdog. If your application uses IOCTL_WDT_ENABLE to enable the Watchdog first and then sends IOCTL_WDT_REBOOT to the WDT driver, your application must trigger the Watchdog once during the Watchdog timer period. If your application has not triggered at the specified period, the device will reboot automatically.

lpInBuffer: unused. nInBufferSize: unused.

lpOutBuffer: unused. nOutBufferSize: unused.

A.2.4 IOCTL_WDT_GETTIMEOUT:

Gets the Watchdog time setting.

lpInBuffer: unused.

nInBufferSize: unused.

lpOutBuffer: The DWORD pointer to your Watchdog time setting. The Watchdog time setting is just a number. 0 means 2 seconds, 1 means 5 seconds, 2 means 10 seconds, 3 means 15 seconds, 4 means 30 seconds, others means 40 seconds. The default setting is 5 seconds.

nOutBufferSize: unused.

A.2.5 IOCTL_WDT_SETTIMEOUT:

Sets the Watchdog time setting.

lpInBuffer : The DWORD pointer to your Watchdog time setting. The Watchdog time setting is just a number. 0 means 2 seconds, 1 means 5 seconds, 2 means 10 seconds, 3 means 15 seconds, 4 means 30 seconds, others means 40 seconds. The default setting is 5 seconds.

nInBufferSize: unused.

lpOutBuffer: unused.

nOutBufferSize: unused.

A.2.6 IOCTL_WDT_REBOOT:

If you want your application to trigger the Watchdog by itself, please use IOCTL_WDT_REBOOT to notify the WDT driver. Otherwise, the WDT will trigger itself automatically.

lpInBuffer : unused.

nInBufferSize: unused.

lpOutBuffer: unused.

nOutBufferSize: unused.

A.3 Examples

```
#define WDT_CODE(ID) CTL_CODE(FILE_DEVICE_UNKNOWN, ID, METHOD_BUFFERED, FILE_ANY_ACCESS)
#define IOCTL_WDT_ENABLE WDT_CODE (0x900)
#define IOCTL_WDT_DISABLE WDT_CODE (0x901)
#define IOCTL_WDT_STROBE WDT_CODE (0x902)
#define IOCTL_WDT_GET_TIMEOUT WDT_CODE (0x903)
#define IOCTL_WDT_SET_TIMEOUT WDT_CODE (0x904)
#define IOCTL_WDT_REBOOT WDT_CODE (0x905)

// For compatibility reasons, you can define IOCTL as below:
// #define IOCTL_WDT_ENABLE 0x1001
// #define IOCTL_WDT_DISABLE 0x1002
// #define IOCTL_WDT_STROBE 0x1003
// #define IOCTL_WDT_GETTIMEOUT 0x1004
// #define IOCTL_WDT_SETTIMEOUT 0x1005
// #define IOCTL_WDT_REBOOT 0x1006

HANDLE m_hWDT=NULL;
TCHAR szClassName[66];

// assign the WDT driver name
wsprintf(szClassName, TEXT("WDT1:"));
// Open the WDT driver m_hWDT = CreateFile(szClassName, GENERIC_READ
GENERIC_WRITE, 0, NULL, OPEN_EXISTING,
FILE_ATTRIBUTE_NORMAL, NULL);
if ( m_hWDT == INVALID_HANDLE_VALUE ) {
```

```
        DebugMsg(CString("WDT driver fail"));
        return;
    }

    DWORD dwTemp;
    DWORD nIndex=2;
    // Set the Watchdog Timer as 10 seconds. Number 2 means 10 seconds.
    DeviceIoControl(m_hWDT, IOCTL_WDT_SET_TIMEOUT, &nIndex,
    sizeof(nIndex), NULL, 0, &dwTemp, NULL);
    // Enable the Watchdog timer
    DeviceIoControl(m_hWDT, IOCTL_WDT_ENABLE, NULL, 0, NULL, 0, &dwTemp,
    NULL);
    While (1) {
        // do your job here';
        Sleep(8000);
        DeviceIoControl(m_hWDT, IOCTL_WDT_STROBE, NULL,0,
    NULL, 0, &dwTemp, NULL);
    }
    DeviceIoControl(m_hWDT, IOCTL_WDT_DISABLE, NULL, , NULL, 0, &dwTemp,
    NULL);
    CloseHandle(m_hWDT);
```


Appendix **B**

Fuse Specifications

B.1 Fuse Specifications

Rating: 250 V_{AC}, 1A

Note! *The fuse is set to break if the input voltage exceeds 32V_{DC}.*

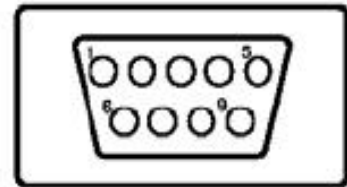


Appendix **C**

Pin Assignments

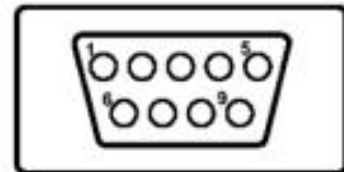
C.1 RS-232 Pin Assignments-TPC-31/TPC-61 (COM1,COM2)

Pin No.	Description
Pin 1	DCD
Pin 2	Rx
Pin 3	Tx
Pin 4	DTR
Pin 5	GND
Pin 6	DSR
Pin 7	RTS
Pin 8	CTS
Pin 9	RI



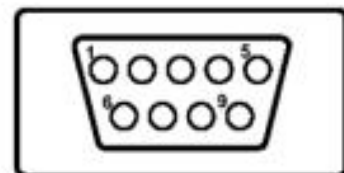
C.2 RS-485 Pin Assignment - TPC-31

Pin No.	Description
Pin 1	No Connection
Pin 2	DATA +
Pin 3	DATA -
Pin 4	No Connection
Pin 5	GND
Pin 6	No Connection
Pin 7	No Connection
Pin 8	No Connection
Pin 9	No Connection



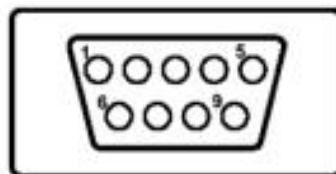
TPC-61 (COM3)

Pin No.	Description
Pin 1	DATA -
Pin 2	DATA +
Pin 3	No Connection
Pin 4	No Connection
Pin 5	GND
Pin 6	No Connection
Pin 7	No Connection
Pin 8	No Connection
Pin 9	No Connection



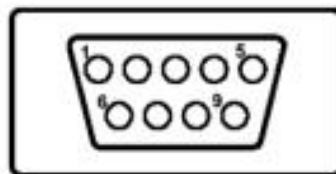
C.3 RS422(COM3) Pin assignment - TPC-61

Pin No.	Description
Pin 1	TX-
Pin 2	TX+
Pin 3	RX+
Pin 4	RX-
Pin 5	GND
Pin 6	No Connection
Pin 7	No Connection
Pin 8	No Connection
Pin 9	No Connection



C.4 CAN Pin assignment - TPC-31

Pin No.	Description
Pin 1	No connection
Pin 2	Data -
Pin 3	IGND
Pin 4	No Connection
Pin 5	No Connection
Pin 6	No Connection
Pin 7	Data +
Pin 8	No Connection
Pin 9	No Connection



Appendix **D**

Visual Settings

There are two powerful and friendly utilities included to extend the visual capabilities of TPC-31T/61T. The two utilities are used to set the font size and rotate the screen.

D.1 Font Setting

Go to start->programs->advantech->system font setting.

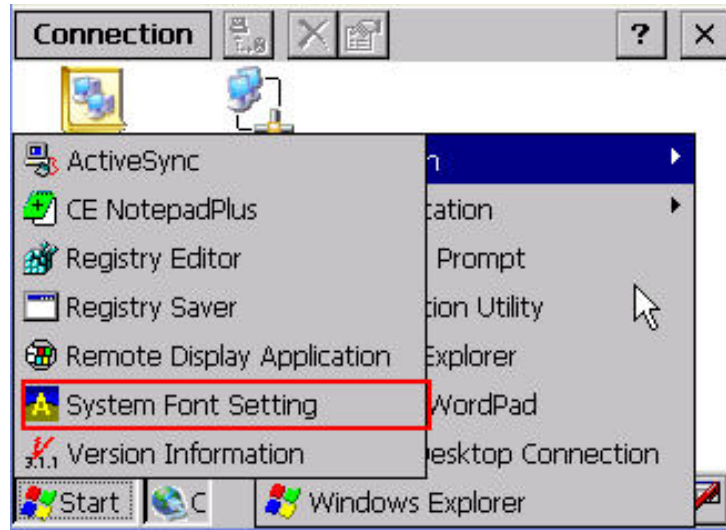


Figure D.1 Font Setting

TPC-31T/61T provides two font settings - normal and small.

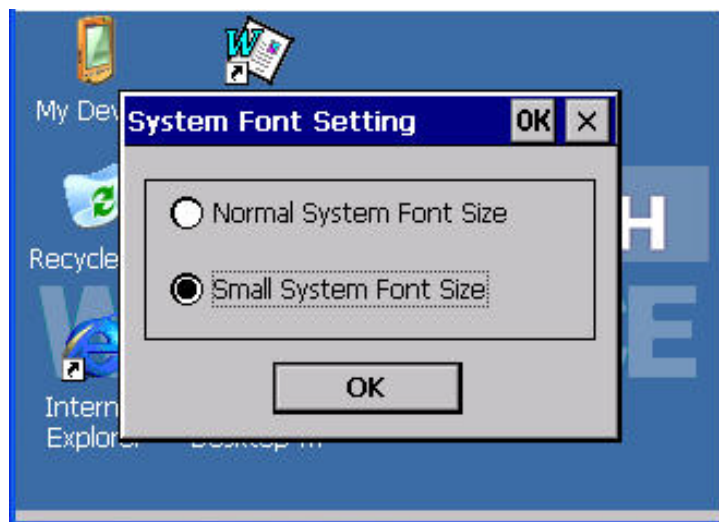


Figure D.2 Small Font Setting

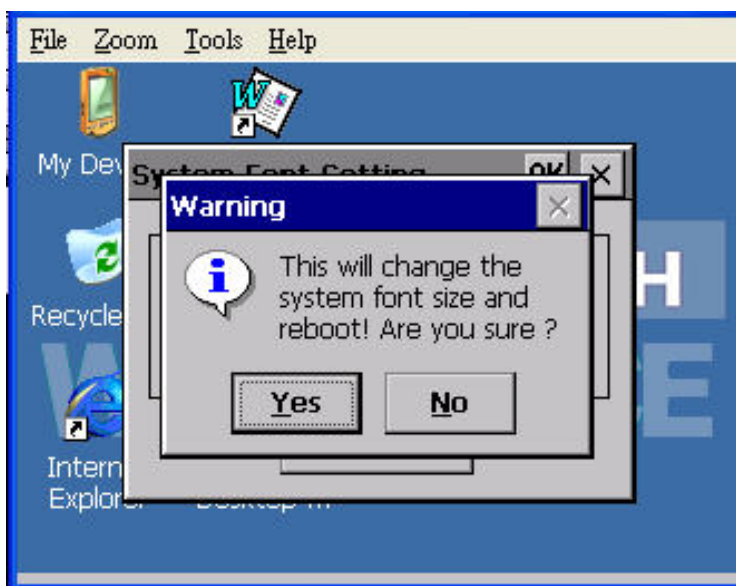


Figure D.3 Change Font Setting



Figure D.4 Small Font Display

D.2 Screen Rotation

Go to start->setting->control panel-> screen rotation as below.



Figure D.5 Screen Rotation

Select how you want the view display.

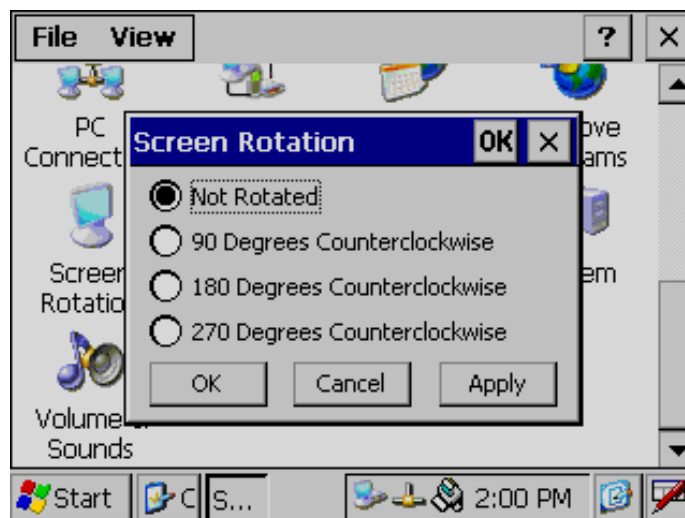


Figure D.6 Screen Rotation Options

This screen is rotated 90 degrees in the example.

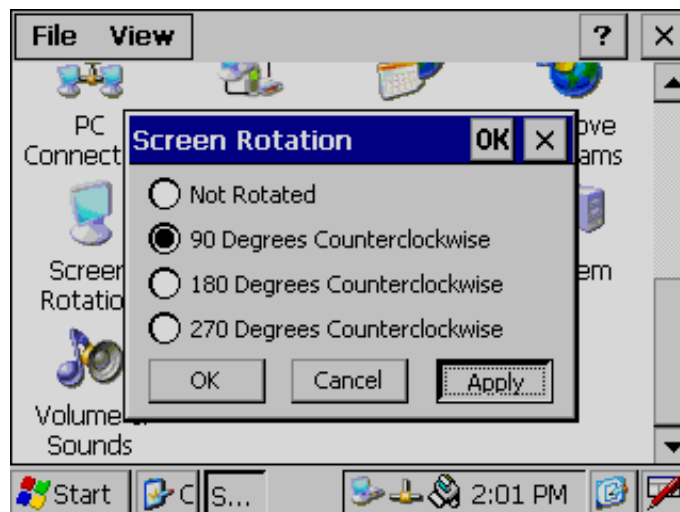


Figure D.7 90 Degrees Rotation

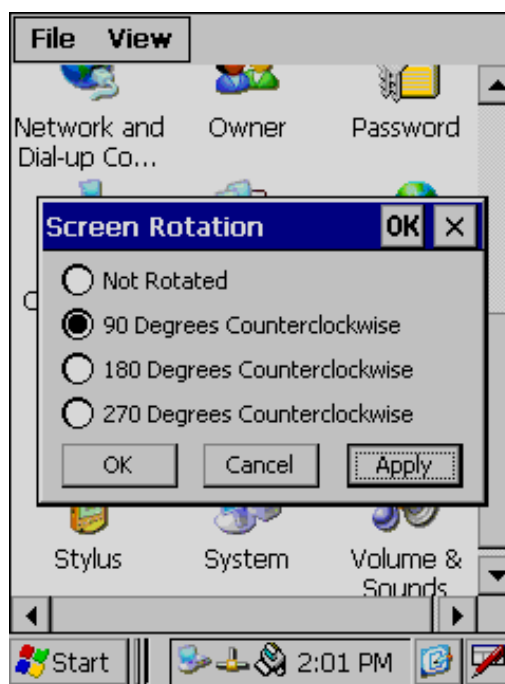


Figure D.8 Portrait Rotation

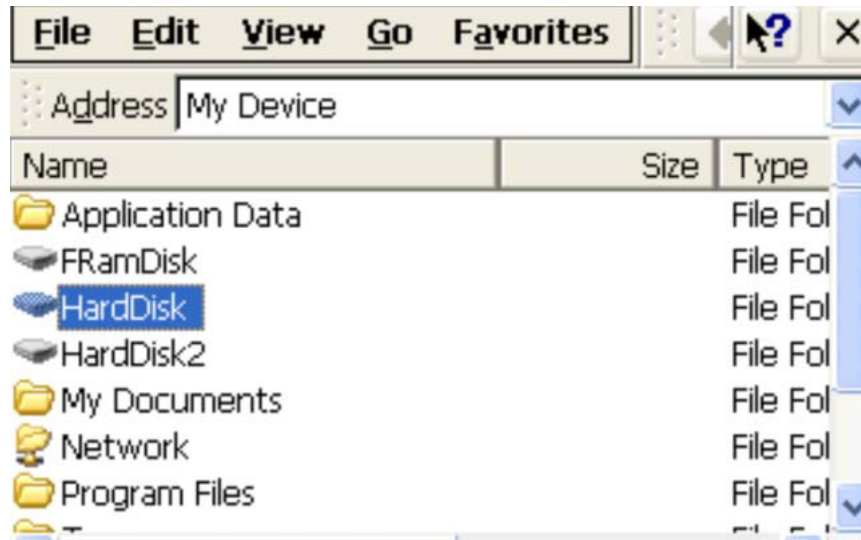
Appendix **E**

TPC-31T /61T Update
Guide

E.1 Updating Image & Bootloader

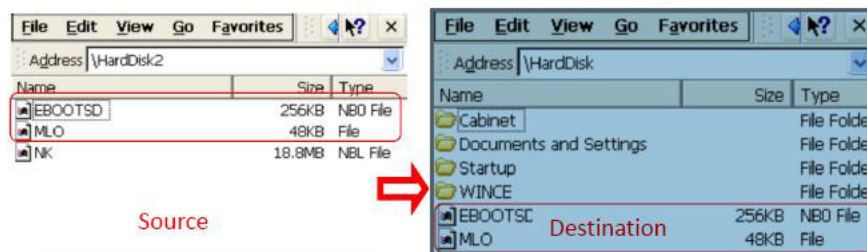
In order to update the image & bootloader for the TPC-31T/61T, please follow below guideline:

Click "My device", you can see two HardDisk (external SD card & internal storage) inside. HardDisk2 (External SD Card) is the image file source while HardDisk (Internal Storage) is destination.



There are three files needed for image and bootloader update (MLO, EBOOTST.nb0, NK.nbl). You need to copy them to an SD card before updating process.

1. Copy new "MLO" and "EBOOTSD.nb0 " files to root directory of HardDisk from HardDisk2.

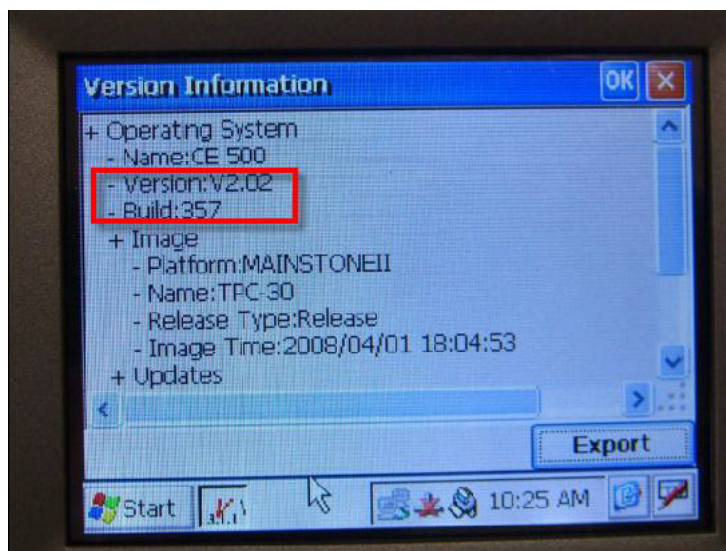


2. Copy new "NK.nbl" file to "WINCE" folder under HardDisk from HardDisk2



3. After a successful file update, reboot the system.
4. The system is initializing and will take around 3 minutes.

5. After initial success, the new image will be implemented. You can check the image version under Version Information.



Note! *This update process is only for image version V3.03 B240. From next image version, TPC-31T/61T system will check image status from external SD card and update latest image to bootloader automatically.*



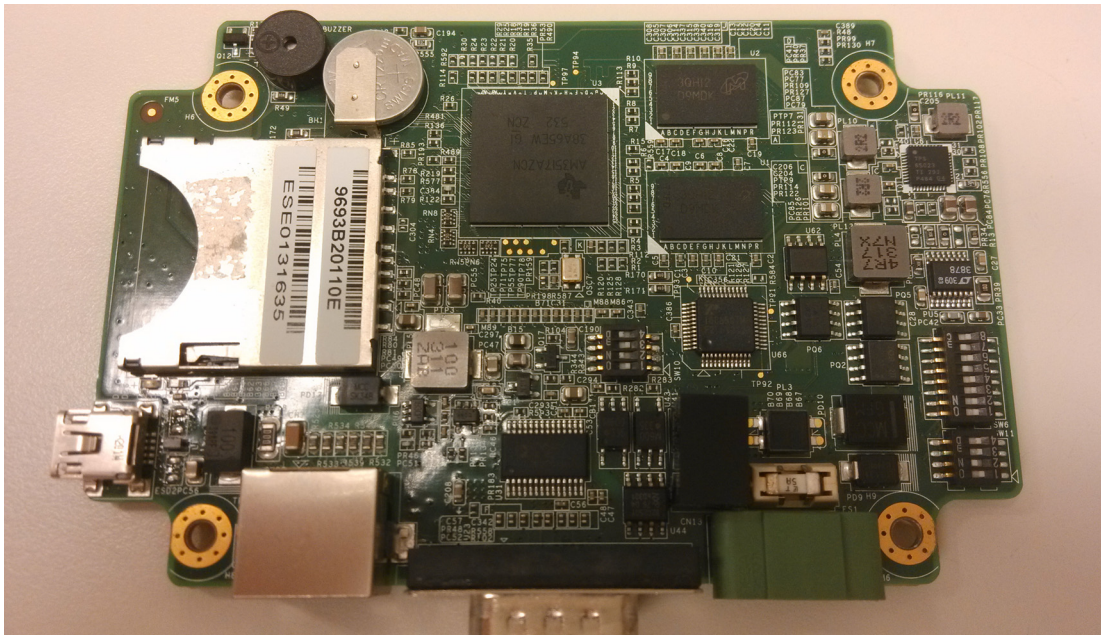
-
6. The Boot Loader version can be checked at system power on stage.

Appendix **F**

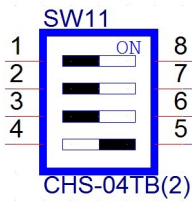
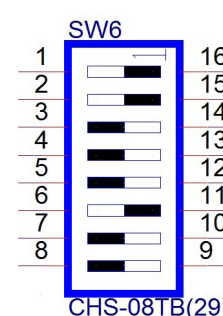
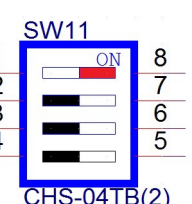
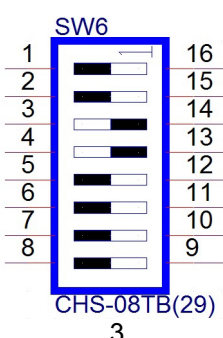
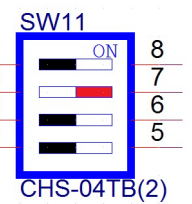
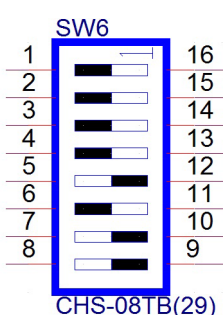
Jumper & Dip Switch Setting List

F.1 TPC-31T Component construction

F.1.1 EAMB-2201 Top side

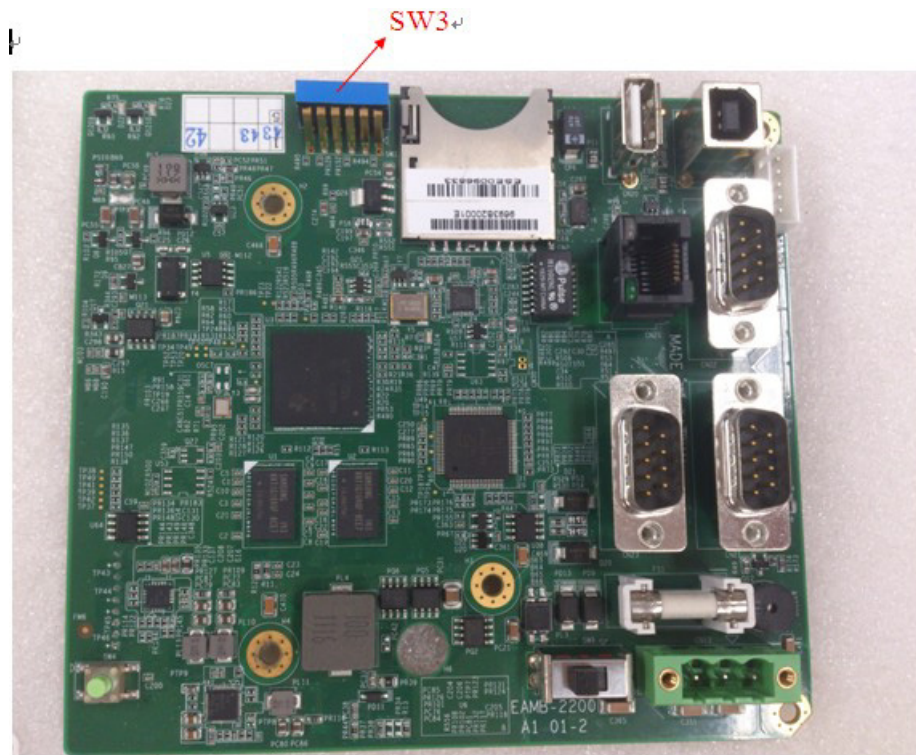


F.2 Jumper Setting DIP Switch

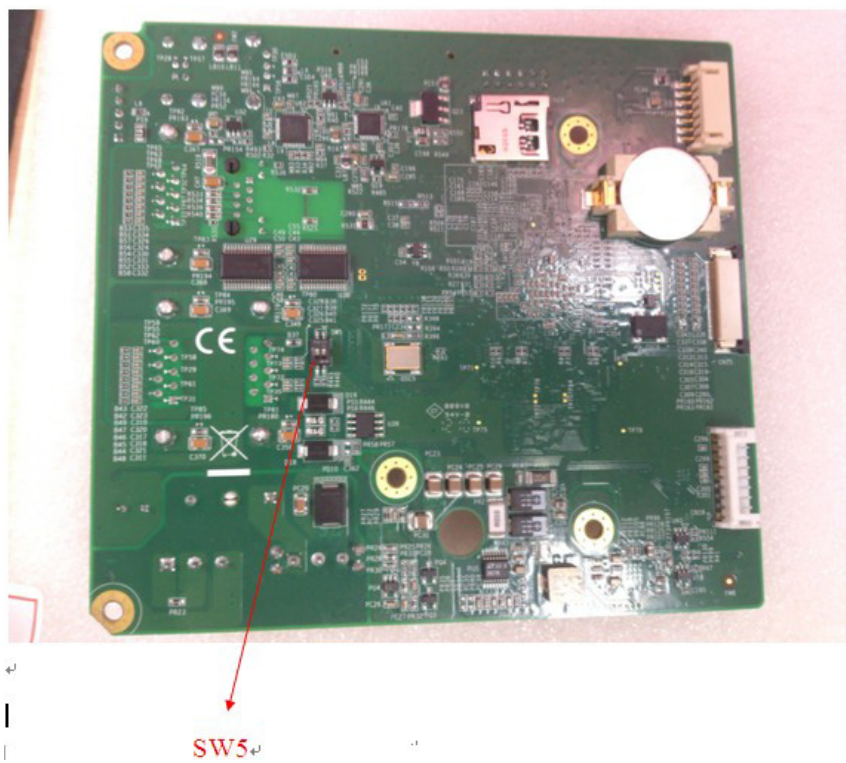
Mode	SW11	SW6	CN12 (DB9)
RS-232	 <p>SW11 1 ON 8 2 7 3 6 4 5 CHS-04TB(2)</p>	 <p>SW6 1 16 2 15 3 14 4 13 5 12 6 11 7 10 8 9 CHS-08TB(29)</p>	<p>Pin1:DCD Pin2:RX Pin3:TX Pin4:DTR Pin5:GND Pin6:DSR Pin7:RTS Pin8:CTS Pin9:RI</p>
RS-485	 <p>SW11 1 ON 8 2 7 3 6 4 5 CHS-04TB(2) SW11(1) Terminator(120 ohm)</p>	 <p>SW6 1 16 2 15 3 14 4 13 5 12 6 11 7 10 8 9 CHS-08TB(29) 3</p>	<p>Pin1:No connection Pin2:D+ Pin3:D- Pin4:No connection Pin5:GND Pin6:No connection Pin7:No connection Pin8:No connection Pin9:No connection</p>
CAN	 <p>SW11 1 ON 8 2 7 3 6 4 5 CHS-04TB(2) SW11(2) Terminator(120 ohm)</p>	 <p>SW6 1 16 2 15 3 14 4 13 5 12 6 11 7 10 8 9 CHS-08TB(29)</p>	<p>Pin1:No connection Pin2:D- Pin3:IGND Pin4:No connection Pin5:No connection Pin6:No connection Pin7:D+ Pin8:No connection Pin9:No connection</p>

F.3 TPC-61T Component construction

F.3.1 EAMB-2200 Top side



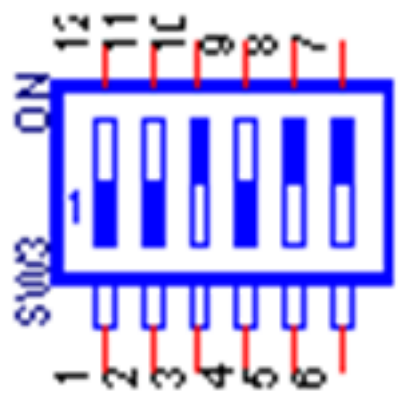
F.3.2 EAMB-2200 Bottom side



F.4 Jumper Setting DIP Switch

F.4.1 SW3 UART Controlled Function

SW3	UART Controlled Function		
Description	This switch is used to select UART Controlled Function		
Default	PIN6:URAT Mode Selection ON		
UART Mode Selection SW3.6	RS485_422 Selection	OFF(RS422)	ON(RS485)



ADVANTECH

eAutomation

www.advantech.com

Please verify specifications before quoting. This guide is intended for reference purposes only.

All product specifications are subject to change without notice.

No part of this publication may be reproduced in any form or by any means, electronic, photocopying, recording or otherwise, without prior written permission of the publisher.

All brand and product names are trademarks or registered trademarks of their respective companies.

© Advantech Co., Ltd. 2012